














Vacuum Industry Experts



HGS

The quality of casting the future

上海鑫熠海科技集团有限公司
Shanghai HGS Technology Group Co.

	Company Profile 公司介绍	
	Product Description 产品介绍	
	Standard Products Series 标准件系列	
	Vacuum Fittings KF Series 真空管配件KF系列	1-10
	Vacuum Fittings ISO Series 真空管配件ISO系列	11-22
	Vacuum Fittings CF Series 真空管配件CF系列	23-32
	Santiarypipe And Fittings Series 卫生级管道&管配件系列	33-41
	Vacuum Bellows Series 真空波纹管系列	42-43
	Vacuum Valve Series 真空阀门系列	44-46
	Vacuum Accessories- Viewport & Electrical Feedthrough 真空其他配件- 视窗&电馈通	47-48
	Non-Standard Products Series- Vacuum Chamber 非标制作系列-真空腔体	49-51

公司简介 Company Profile

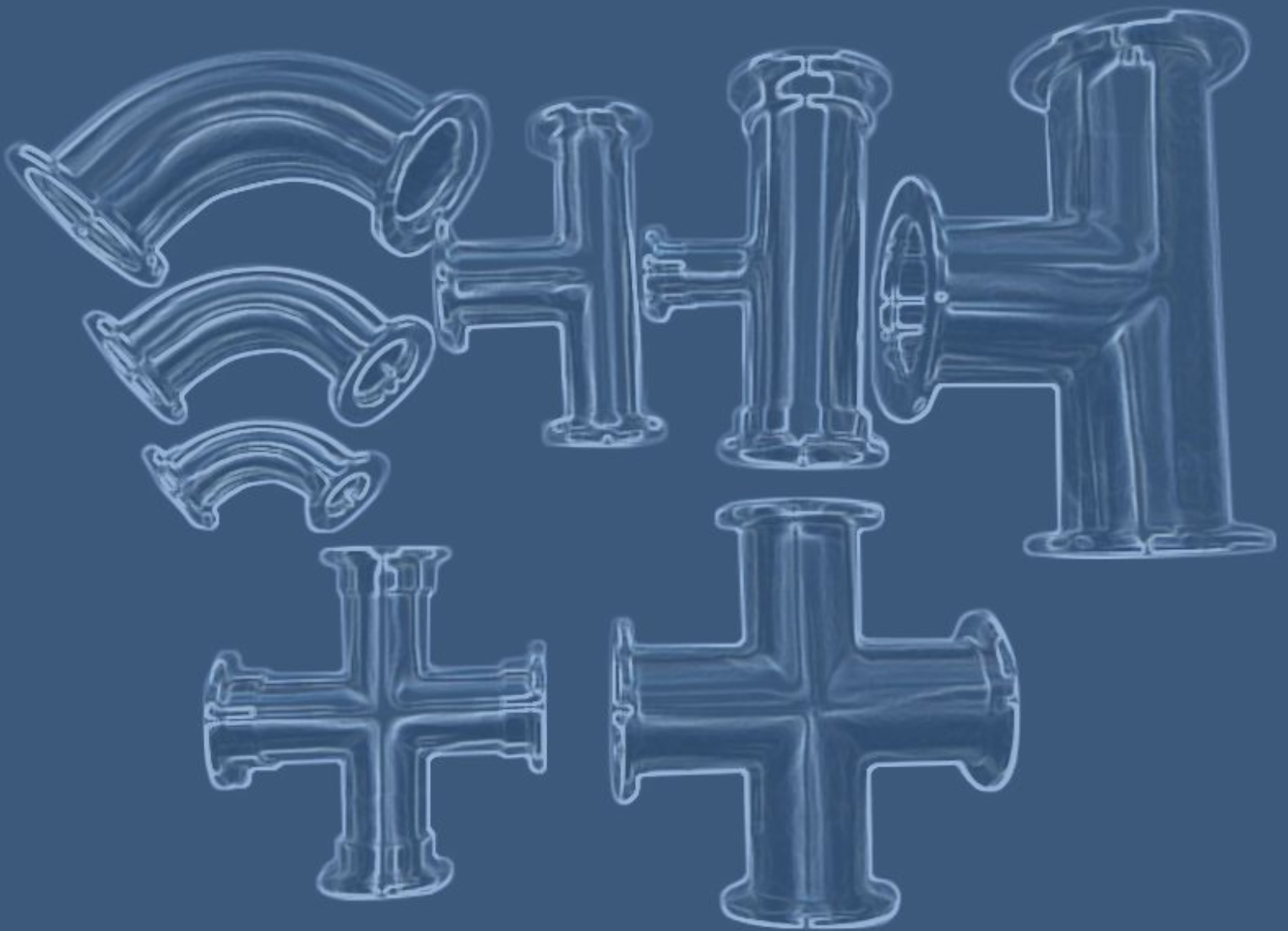
We specialize in the design and manufacture of various vacuum application system components and laboratory chambers. These include vacuum flanges, pipe fittings, vacuum valves, vacuum viewport, vacuum bellows, feedthroughs, standard parts and special parts for vacuum chambers, custom parts for vacuum chambers and CVD chemical deposition equipment. Mainly used in semiconductor, aerospace, chemical, pharmaceutical, food, automobile and other fields. The company has internationally advanced numerical control equipment and facilities and a rigorous and complete quality monitoring system. It has gathered a number of technicians with many years of work experience in the vacuum industry. The products are exported to all over the world.

The company has established a production base of 5,000 square meters in Jiangxi, with a number of professional technicians. Each production line of the factory is equipped with imported advanced equipment to ensure the continuous stability of product quality, and continuously innovate and develop products in the vacuum field to provide customers with superior quality Of vacuum products. At present, our production base has also become the teaching and research base of Nanchang University in Jiangxi.

On the premise of adhering to the principle of good faith, the company provides customers with high-quality services and products. On the road of industry development, we will use technology and innovation to give life to products in order to become a trusted and satisfactory partner of customers!

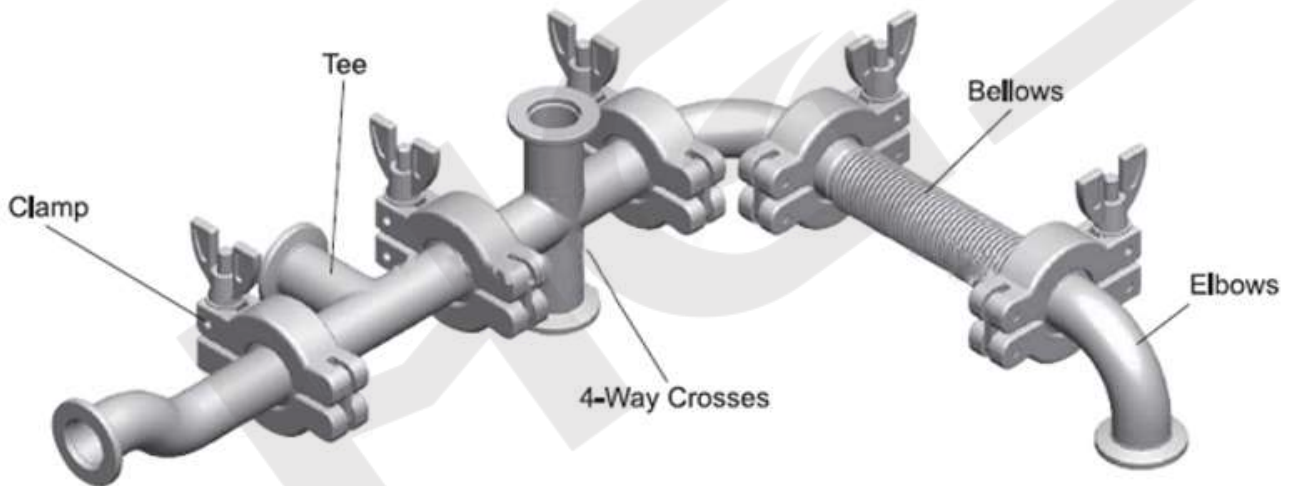
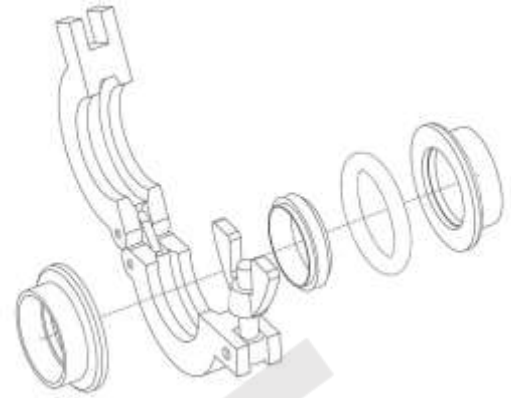
品质铸造未来
Quality creates the future

KF Flanges and Fittings



Vacuum Fittings KF Series

ISO-KF vacuum fittings are small size quick flange fittings. Usually it is composed of flange, clamp, O-Ring and centering ring. No need to use other tools, just simply twist the disc nut by hand to loosen or compress the connection. The applicable vacuum is up to 10⁻⁸mbar. Nominal diameter sizes include: DN10, 16, 25; 40, 50 and other sizes. The flange itself is usually made of 304, 316 stainless steel and other materials, and the flange sealing material is usually Viton, Buna, Silicone, EPDM, aluminum, etc. The manufacturing standards of ISO-KF are: DIN28403, ISO2861

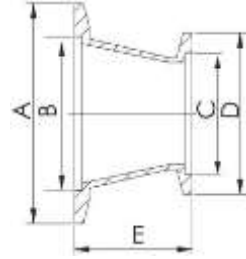


Specifications

Blanks	:304(other material available upon request)
Flanges	:304(other material available upon request)
Fittings	:304(other material available upon request)
Clamps	:Aluminium
O Ring material	:Viton or NBR Temperature
Range	:150°(Viton)80°(NBR)
Vacuum Rate	:10 ⁸ torr

- Larger or special size available upon request

KF Reducer Flanges



Size	Parts No	Dimensions				
		A	B	C	D	E
KF25/16	MVK-10502	40.00	26.16	17.27	30.00	40.00
KF40/16	MVK-10502	55.00	41.15	17.27	30.00	40.00
KF40/25	MVK-10502	55.00	41.15	26.16	40.00	40.00
KF50/16	MVK-10502	75.00	52.20	17.20	30.00	40.00
KF50/25	MVK-10502	75.00	52.32	26.16	40.00	40.00
KF50/40	MVK-10502	75.00	52.32	41.15	55.00	40.00

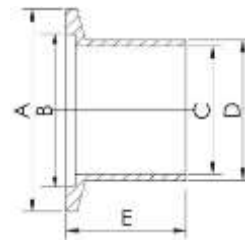
KF Full Nipples



Unit=mm

Size	Parts No.	Dimensions		
		A	B	C
KF10	MKV-12401	30.00	12.20	63.50
KF16	MKV-12401	30.00	17.20	58.40
KF25	MKV-12401	40.00	26.20	103.10
KF40	MKV-12401	55.00	41.20	121.90
KF50	MKV-12401	75.00	52.20	160.00

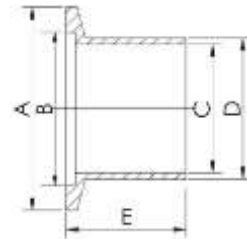
KF Half Nipple(Long)



Unit=mm

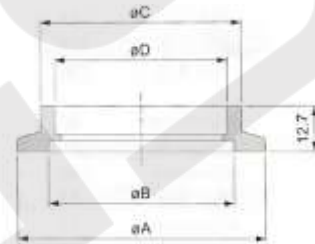
Size	Parts No	Dimensions				
		A	B	C	D	E
KF10	MVK-11402	30.00	12.70	10.00	14.00	40.00
KF16	MVK-11402	30.00	19.05	16.00	20.00	40.00
KF25	MVK-11402	40.00	25.40	25.00	28.00	40.00
KF40	MVK-11402	55.00	38.10	40.00	44.50	40.00
KF50	MVK-11402	75.00	50.80	50.00	55.00	40.00

KF Half Nipple(Short)



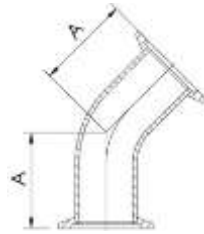
Size	Parts No.	Dimensions				
		A	B	C	D	E
KF10	MKV-12403	30.00	12.20	13.00	15.50	12.70
KF16	MKV-12403	30.00	17.20	19.30	22.20	12.70
KF25	MKV-12403	40.00	26.20	25.90	28.60	12.70
KF40	MKV-12403	55.00	41.20	38.60	44.50	19.10
KF50	MKV-12403	75.00	52.20	51.30	57.20	19.10

KF Socket Weld Flange



Size	Parts No.	Dimensions			
		A	B	C	D
KF10	MKV-12404	30.00	12.20	16.50	13.00
KF16	MKV-12404	30.00	17.20	20.50	19.30
KF25	MKV-12404	40.00	26.20	29.00	25.70
KF40	MKV-12404	55.00	41.20	44.70	38.40
KF50	MKV-12404	75.00	52.20	57.40	51.00
KF63	MKV-12404	87.00	70.00	67.50	63.70

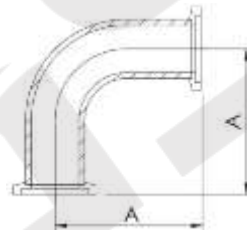
KF Elbows 45°



Unit=mm

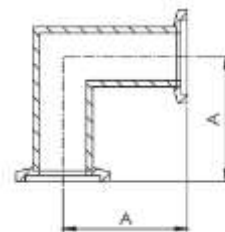
Size	Parts No	Dimensions
		A
KF16	MVK-10602	25.50
KF25	MVK-10602	29.50
KF40	MVK-10602	35.50
KF50	MVK-10602	42.00

KF Elbows 90°



Unit=mm

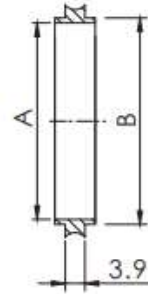
Size	Parts No	Dimensions
		A
KF16	MVK-10612	38.30
KF25	MVK-10612	56.20
KF40	MVK-10612	78.40
KF50	MVK-10612	107.00



Unit=mm

Size	Parts No	Dimensions
		A
KF16	MVK-10622	29.21
KF25	MVK-10622	50.00
KF40	MVK-10622	60.96
KF50	MVK-10622	69.84

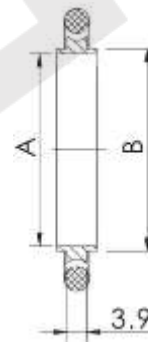
KF Certering Ring



Unit=mm

Size	Parts No	Dimensions	
		A	B
KF10	MVK-12401	10.00	12.00
KF16	MVK-12401	16.00	17.00
KF25	MVK-12401	25.00	26.00
KF40	MVK-12401	40.00	41.00
KF50	MVK-12401	50.00	52.00

KF Certering With O-Ring

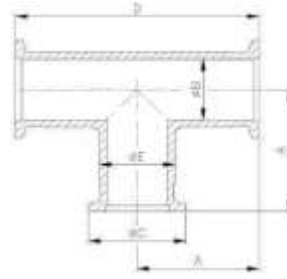


Unit=mm

Size	Parts No	Dimensions	
		A	B
KF10	MVK-12501	10.00	12.00
KF16	MVK-12501	16.00	17.00
KF25	MVK-12501	25.00	26.00
KF40	MVK-12501	40.00	41.00
KF50	MVK-12501	50.00	52.00



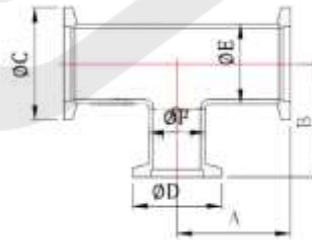
KF Equal Tees



Unit=mm

Size	Parts No.	Dimensions			
		A	B	C	D
KF10	MKV-10311	38.30	19.05	30.00	76.60
KF16	MKV-10311	38.30	19.05	30.00	76.60
KF16-E	MKV-10311	40.00	19.05	30.00	80.00
KF25	MKV-10311	51.40	25.40	40.00	102.80
KF25-E	MKV-10311	50.00	25.40	40.00	100.00
KF40	MKV-10311	61.00	38.10	55.00	122.00
KF40-E	MKV-10311	65.00	38.10	55.00	130.00
KF50	MKV-10311	80.00	50.80	75.00	160.00
KF50-E	MKV-10311	70.00	50.80	75.00	140.00

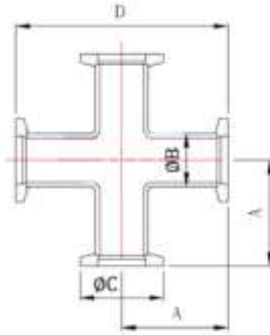
KF Reducer



Unit=mm

Size	Parts No.	Dimensions					
		A	B	C	D	E	F
KF25/16	MKV-10312	52	37.5	40	30	25.4	19.05
KF25/16-E	MKV-10312	50	40	40	30	25.4	19.05
KF40/16	MKV-10312	61	52	55	30	38.1	19.05
KF40/16-E	MKV-10312	65	40	55	30	38.1	19.05
KF40/25	MKV-10312	61	57.8	55	40	38.1	25.4
KF40/25-E	MKV-10312	65	50	55	40	38.1	25.4
KF50/16	MKV-10312	80	58.2	75	30	50.8	19.05
KF50/16-E	MKV-10312	70	50	75	30	50.8	19.05
KF50/25	MKV-10312	80	64.1	75	40	50.8	25.4
KF50/25-E	MKV-10312	70	65	75	40	50.8	25.4
KF50/40	MKV-10312	80	67.3	75	55	50.8	38.1
KF50/40-E	MKV-10312	70	65	75	55	50.8	38.1

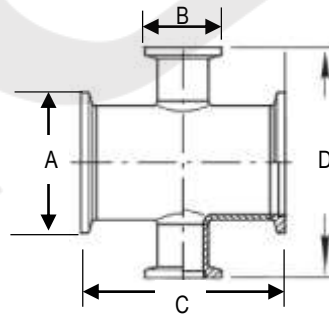
KF 4-Way



Unit=mm

Size	Parts No.	Dimensions			
		A	B	C	D
KF16	MKV-10401	38.3	19.05	30	76.6
KF16-E	MKV-10401	40	19.05	30	80
KF25	MKV-10401	51.4	25.4	40	102.8
KF25-E	MKV-10401	50	25.4	40	100
KF40	MKV-10401	61	38.1	55	122
KF40-E	MKV-10401	65	38.1	55	130
KF50	MKV-10401	80	50.8	75	160
KF50-E	MKV-10401	70	50.8	75	140

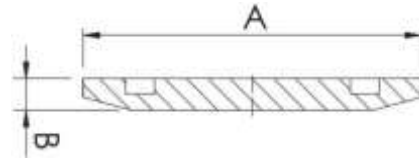
KF Reducing 4-Way Crosses



Unit=mm

Size	Parts No.	Dimensions			
		A	B	C	D
KF25/16	MKV-10402	40	30	100	80
KF40/16	MKV-10402	55	30	130	80
KF40/25	MKV-10402	55	40	130	100
KF50/25	MKV-10402	75	40	140	100
KF50/40	MKV-10402	75	55	140	130

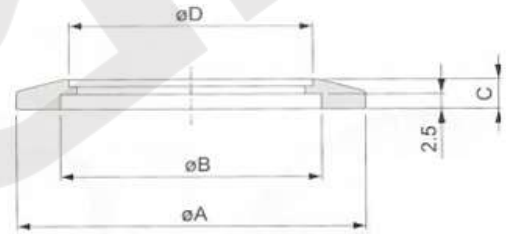
KF Blank



Unit=mm

Size	Parts No.	Dimensions	
		A	B
KF10	MKV-11601	30.00	5.00
KF16	MKV-11601	30.00	5.00
KF25	MKV-11601	40.00	5.00
KF40	MKV-11601	55.00	5.00
KF50	MKV-11601	75.00	5.00
KF63	MKV-11601	87.00	5.00
KF80	MKV-11601	114.00	12.00
KF100	MKV-11601	134.00	12.00
KF160	MKV-11601	190.00	12.00

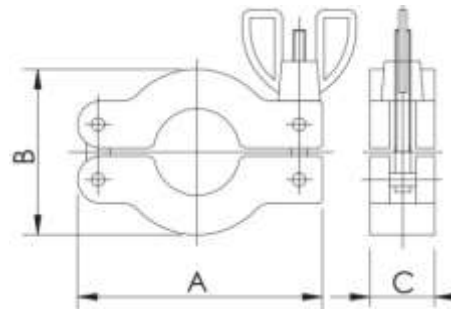
KF Bored Flange



Size	Parts No.	Dimensions			
		A	B	C	D
KF10	MKV-11602	30.00	12.20	5.00	12.90
KF16	MKV-11602	30.00	17.20	5.00	19.30
KF25	MKV-11602	40.00	26.20	5.00	25.70
KF40	MKV-11602	55.00	41.20	5.00	38.40
KF50	MKV-11602	75.00	52.20	5.00	51.00
KF63	MKV-11602	87.00	70.00	5.00	63.70
KF80	MKV-11602	114.00	83.00	12.00	76.40
KF100	MKV-11602	134.00	102.00	12.00	101.80
KF160	MKV-11602	190.00	153.00	12.00	152.90

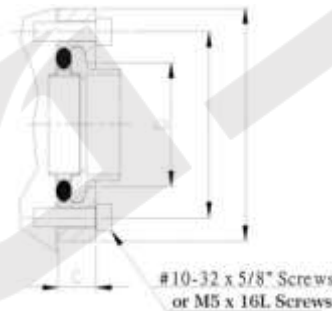


KF Clamps



Unit=mm

Size	Parts No	Dimension		
		A	B	C
KF16(KF10)	MVK-11301	63	42.5	16
KF25	MVK-11301	72	54	16
KF40	MVK-11301	90	70	16
KF50	MVK-11301	114	90	20

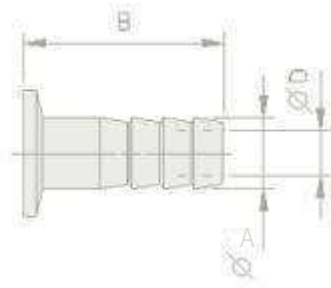


Unit=mm

Size	Parts No.	Dimensions				Bolt Size*No
		A	B	C	D	
KF16	MVK-11302	50.8	38.1	9.17	22.86	#10-32x5/8"L*6
KF25	MVK-11302	60.2	48.01	9.83	32	#10-32x5/8"L*6
KF40	MVK-11302	74.68	61.98	9.3	46.22	#10-32x5/8"L*6
KF50	MVK-11302	95.25	82.6	10.26	59.69	#10-32x5/8"L*8
KF16-M	MVK-11302	50.8	38.1	9.17	22.86	M5x16L*6
KF25-M	MVK-11302	60.2	48.01	9.83	32	M5x16L*6
KF40-M	MVK-11302	74.68	61.98	9.3	46.22	M5x16L*6
KF50-M	MVK-11302	95.25	82.6	10.26	59.69	M5x16L*8



KF Rubber Hose Adaptor



Unit=mm

Size	Parts No	Dimension		
		A	B	Hose Size
KF10	MVK-11331	16.00	40.00	5/8"
KF16	MVK-11331	19.10	40.00	3/4"
KF25	MVK-11331	22.20	40.00	7/8"
KF40	MVK-11331	41.30	40.00	1 5/8"
KF50	MVK-11331	47.70	40.00	1 7/8"



- For more adaptor sizes, please contact our customer service staff.

ISO Flanges and Fittings



Vacuum Fittings ISO Series

ISO flanges and piping can be used in a variety of applications, from atmospheric pressure to high vacuum, that are often assembled and disassembled. Typical pipe diameters exceed 50mm (2 inches). Can withstand 150°C bake if Viton O-ring is used. The two commonly used forms of ISO flanges are ISO-K and ISOF, both of which are large-sized vacuum joints with nominal diameters of DN 63, 100, 160, 200, 250, 320, 400, 500 and 630. . ISO flanges can be used where vacuum levels up to 10⁻⁸mbar are required. The flange is usually made of 304, 316 stainless steel, etc., and the sealing material is usually Viton, Buna, Silicone, EPDM, aluminum wire, etc. Manufacturing standards include: DIN28404, ISO1609.



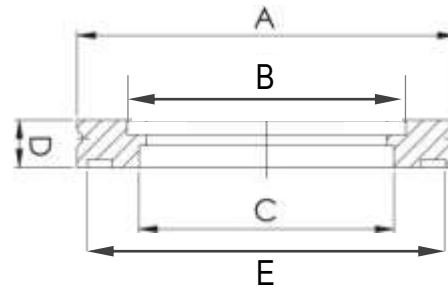
- a、ISO-K真空接头通常由法兰 (flang)、法兰爪 (clamp)、密封圈 (O-Ring)、中心定位环 (centering ring) 组成。
- b、ISO-F真空接头通常由法兰 (flang)、密封圈 (O-Ring)、中心定位环 (centering ring) 组成，与ISO-K不同的地方是法兰用螺栓坚固。

Specifications

Blanks&Flanges	:304(other material available upon request)
Retainer Rings	:304(other material available upon request)
Centerings	:304(other material available upon request)
Clamps	:Aluminium
Outer Rings	:Aluminium
O Ring materia	:Viton or NBR
Temperature Range	:150°(Viton)80°(NBR)
Vacuum Rate	:10 ⁻⁸ torr

- Larger or special size available upon request

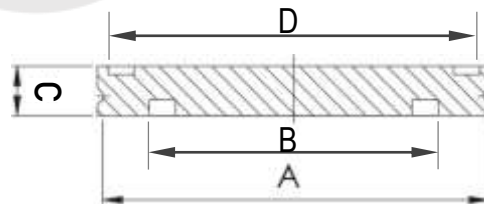
ISO Bored Flanges



Unit= mm

Size	Parts No.	Dimensions				
		A	B	C	D	E
ISO63	MVI-11411	95.00	70.00	63.70	12.00	90.00
ISO80	MVI-11411	110.00	83.00	76.40	12.00	105.00
ISO100	MVI-11411	130.00	102.00	101.80	12.00	125.00
ISO160	MVI-11411	180.00	153.00	152.90	12.00	175.00
ISO200	MVI-11411	240.00	213.00	203.70	12.00	235.00
ISO250	MVI-11411	290.00	261.00	254.50	12.00	285.00
ISO320	MVI-11411	370.00	318.00	305.30	12.00	365.00
ISO400	MVI-11411	450.00	400.00	406.90	12.00	445.00
ISO500	MVI-11411	550.00	501.00	508.80	12.00	545.00

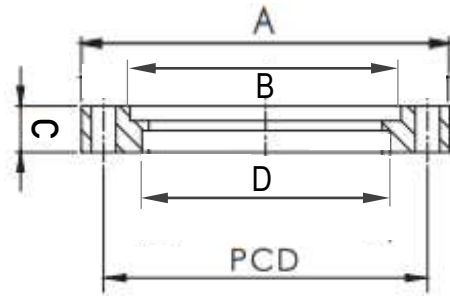
ISO Blank Flanges



Unit= mm

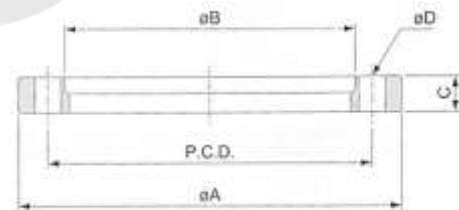
Size	Parts No.	Dimensions			
		A	B	C	D
ISO63	MVI-11611	95.00	70.00	12.00	90.00
ISO80	MVI-11611	110.00	83.00	12.00	105.00
ISO100	MVI-11611	130.00	102.00	12.00	125.00
ISO160	MVI-11611	180.00	153.00	12.00	175.00
ISO200	MVI-11611	240.00	213.00	12.00	235.00
ISO250	MVI-11611	290.00	261.00	12.00	285.00
ISO320	MVI-11611	370.00	318.00	17.00	365.00
ISO400	MVI-11611	450.00	400.00	17.00	445.00
ISO500	MVI-11611	550.00	501.00	17.00	545.00

ISO Bolted Flanges



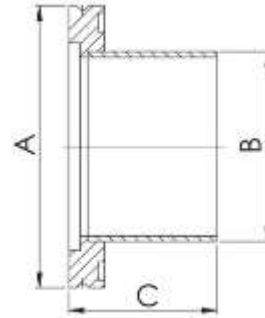
Size	Parts No.	Dimensions				
		A	B	C	D	P.C.D
ISO63	MVI-11412	130.00	70.00	12.00	63.70	110.00
ISO80	MVI-11412	145.00	83.00	12.00	76.40	125.00
ISO100	MVI-11412	165.00	102.00	12.00	101.80	145.00
ISO160	MVI-11412	225.00	153.00	16.00	152.90	200.00
ISO200	MVI-11412	285.00	213.00	16.00	203.70	260.00
ISO250	MVI-11412	335.00	261.00	16.00	254.50	310.00
ISO320	MVI-11412	425.00	318.00	20.00	305.30	395.00
ISO400	MVI-11412	510.00	400.00	20.00	406.90	480.00
ISO500	MVI-11412	610.00	501.00	20.00	508.80	580.00

Rotatable Bolt Ring



Size	Parts No.	Dimensions			
		A	B	C	P.C.D
ISO63	MVI-11413	130.00	98.5	12.00	110.00
ISO80	MVI-11413	145.00	113.5	12.00	125.00
ISO100	MVI-11413	165.00	133.5	12.00	145.00
ISO160	MVI-11413	225.00	185.7	16.00	200.00
ISO200	MVI-11413	285.00	245.7	16.00	260.00
ISO250	MVI-11413	335.00	295.7	16.00	310.00
ISO320	MVI-11413	425.00	375.8	20.00	395.00
ISO400	MVI-11413	510.00	458.8	20.00	480.00
ISO500	MVI-11413	610.00	558.8	20.00	580.00

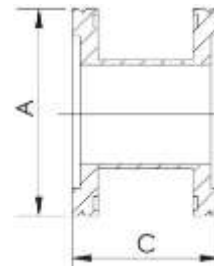
ISO Half Nipples



Unit= mm

Size	Parts No	Dimensions		
		A	B	C
ISO63	MVI-11402	95.00	63.50	100.00
ISO80	MVI-11402	110.00	76.20	100.00
ISO100	MVI-11402	130.00	101.60	100.00
ISO160	MVI-11402	180.00	152.40	100.00
ISO200	MVI-11402	240.00	203.20	100.00
ISO250	MVI-11402	290.00	254.00	100.00
ISO320	MVI-11402	370.00	304.80	100.00
ISO400	MVI-11402	450.00	406.80	100.00
ISO500	MVI-11402	550.00	508.00	100.00

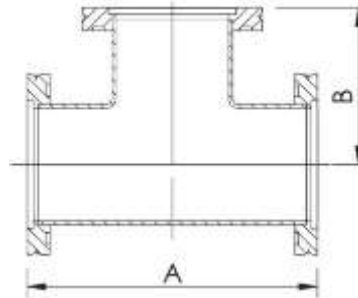
ISO Full Nipples



Unit= mm

Size	Parts No.	Dimensions	
		A	C
ISO63	MVI-12411	95.00	100
ISO80	MVI-12411	110.00	100
ISO100	MVI-12411	130.00	100
ISO160	MVI-12411	180.00	100
ISO200	MVI-12411	240.00	100
ISO250	MVI-12411	290.00	100
ISO320	MVI-12411	370.00	200
ISO400	MVI-12411	450.00	200
ISO500	MVI-12411	550.00	200

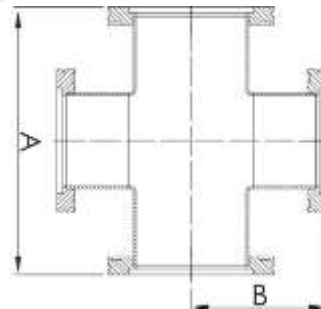
ISO Tees



Unit= mm

Size	Parts No	Dimensions	
		A	B
ISO63	MVI-10321	165.60	82.80
ISO80	MVI-10321	178.30	89.15
ISO100	MVI-10321	210.00	105.00
ISO160	MVI-10321	267.20	133.60
ISO200	MVI-10321	356.00	178.00
ISO250	MVI-10321	416.00	208.00

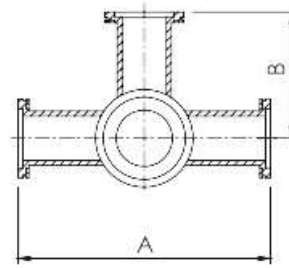
ISO Crosses



Unit= mm

Size	Parts No	Dimensions	
		A	B
ISO63	MVI-10421	165.60	82.80
ISO80	MVI-10421	178.30	89.15
ISO100	MVI-10421	210.00	105.00
ISO160	MVI-10421	267.20	133.60
ISO200	MVI-10421	356.00	178.00
ISO250	MVI-10421	416.00	208.00

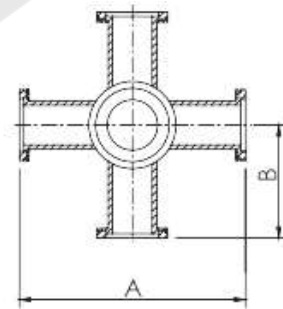
ISO 5-Way Crosses



Unit=mm

Size	Parts No.	Dimensions	
		A	B
ISO63	MVI-10521	165.00	82.50
ISO80	MVI-10521	177.80	88.90
ISO100	MVI-10521	209.80	104.90
ISO160	MVI-10521	266.60	133.30

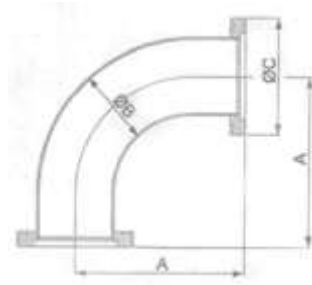
ISO 6-Way Crosses



Unit=mm

Size	Parts No.	Dimensions	
		A	B
ISO63	MVI-10522	165.00	82.50
ISO80	MVI-10522	177.80	88.90
ISO100	MVI-10522	209.80	104.90
ISO160	MVI-10522	266.60	133.30

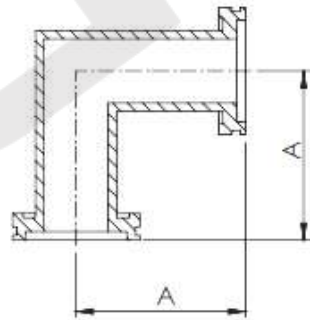
ISO Elbows 90°



Unit= mm

Size	Parts No	Dimension		
		A	B	C
ISO63	MVI-10621	138.40	63.50	95.00
ISO80	MVI-10621	166.90	76.20	110.00
ISO100	MVI-10621	217.70	101.60	130.00
ISO160	MVI-10621	235.20	152.40	180.00

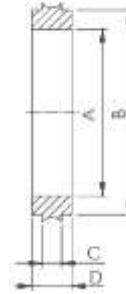
ISO 90°Mitered Elbows



Unit= mm

Size	Parts No.	Dimensions
		A
ISO63	MVI-10622	82.60
ISO80	MVI-10622	88.90
ISO100	MVI-10622	104.90
ISO160	MVI-10622	138.00

ISO Centering Ring



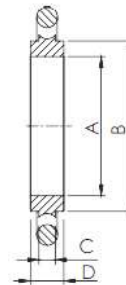
Unit= mm

Size	Parts No.	Dimensions			
		A	B	C	D
ISO63	MVI-2406	67.00	69.60	3.90	8.00
ISO80	MVI-2406	80.00	82.60	3.90	8.00
ISO100	MVI-2406	100.00	101.60	3.90	8.00
ISO160	MVI-2406	150.00	152.60	3.90	8.00
ISO200	MVI-2406	210.00	212.60	3.90	8.00
ISO250	MVI-2406	257.50	260.40	3.90	8.00
ISO320	MVI-2406	312.00	317.30	5.60	12.00
ISO400	MVI-2406	394.00	399.20	5.60	12.00
ISO500	MVI-2406	494.00	500.20	5.60	12.00

ISO Centering Ring With O'Ring



Available Area: Europe



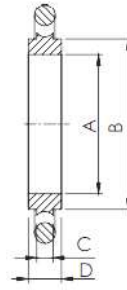
Unit= mm

Size	Parts No.	Dimensions			
		A	B	C	D
ISO63	MVI-2407	68.00	70.00	3.90	8.00
ISO80	MVI-2407	81.00	82.60	3.90	8.00
ISO100	MVI-2407	100.00	102.00	3.90	8.00
ISO160	MVI-2407	148.00	153.00	3.90	8.00
ISO200	MVI-2407	210.00	213.00	3.90	8.00
ISO250	MVI-2407	257.50	261.00	3.90	8.00
ISO320	MVI-2407	312.00	318.00	5.60	12.00
ISO400	MVI-2407	394.00	400.00	5.60	12.00
ISO500	MVI-2407	494.00	501.00	5.60	12.00

ISO Centering Ring With O'Ring



Available Area: U.S.A



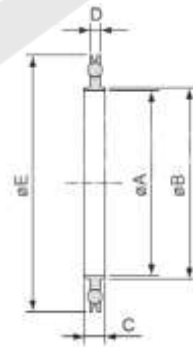
Unit= mm

Size	Parts No.	Dimensions			
		A	B	C	D
ISO63	MVI-2408	67.00	69.60	3.90	8.00
ISO80	MVI-2408	80.00	82.60	3.90	8.00
ISO100	MVI-2408	100.00	100.00	3.90	8.00
ISO160	MVI-2408	150.00	152.60	3.90	8.00
ISO200	MVI-2408	210.00	212.60	3.90	8.00
ISO250	MVI-2408	257.50	260.40	3.90	8.00
ISO320	MVI-2408	312.00	317.30	5.60	12.00
ISO400	MVI-2408	394.00	399.20	5.60	12.00
ISO500	MVI-2408	494.00	500.20	5.60	12.00

ISO Centering+O-Ring+Outer Rings



Available Area: Europe



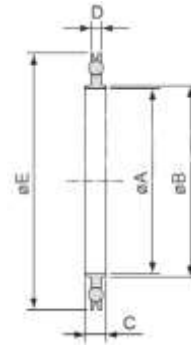
Unit= mm

Size	Parts No.	Dimensions				
		A	B	C	D	E
ISO63	MVI-2501	68.00	70.00	8.00	3.90	94.00
ISO80	MVI-2501	81.00	82.60	8.00	3.90	109.00
ISO100	MVI-2501	100.00	102.00	8.00	3.90	128.00
ISO160	MVI-2501	148.00	153.00	8.00	3.90	179.00
ISO200	MVI-2501	210.00	213.00	8.00	3.90	238.00
ISO250	MVI-2501	257.50	261.00	8.00	3.90	287.00
ISO320	MVI-2501	312.00	318.00	12.00	5.60	344.00
ISO400	MVI-2501	394.00	400.00	12.00	5.60	446.00
ISO500	MVI-2501	494.00	501.00	12.00	5.60	535.00

ISO Centering+O-Ring+Outer Rings



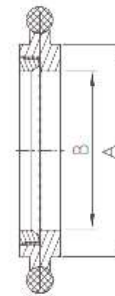
Available Area: U.S.A



Unit= mm

Size	Parts No.	Dimensions				
		A	B	C	D	E
ISO63	MVI-2502	67.00	69.50	8.00	3.90	94.00
ISO80	MVI-2502	80.00	82.60	8.00	3.90	109.00
ISO100	MVI-2502	100.00	101.60	8.00	3.90	128.00
ISO160	MVI-2502	150.00	152.60	8.00	3.90	179.00
ISO200	MVI-2502	210.00	212.60	8.00	3.90	238.00
ISO250	MVI-2502	257.50	260.40	8.00	3.90	287.00
ISO320	MVI-2502	312.00	317.30	12.00	5.60	344.00
ISO400	MVI-2502	394.00	399.20	12.00	5.60	446.00
ISO500	MVI-2502	494.00	500.20	12.00	5.60	535.00

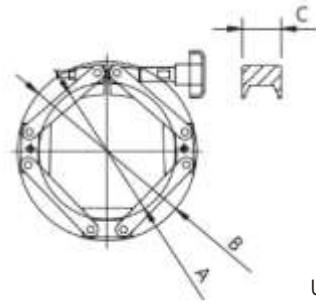
ISO Screened Centering Ring With O'Rings



Unit= mm

Size	Parts No.	Dimensions	
		A	B
ISO100	MVI-2503	102.00	92.00
ISO160	MVI-2503	153.00	139.70
ISO200	MVI-2503	213.00	206.80

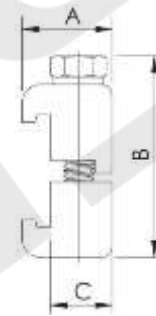
NW Chain Clamps



Unit= mm

Size	Parts No	Dimension		
		A	B	C
NW63	MVI-1300	98.00	134.40	30.00
NW80	MVI-1300	117.10	153.00	30.00
NW100	MVI-1300	136.50	171.68	30.00
NW160	MVI-1300	197.90	231.70	30.00

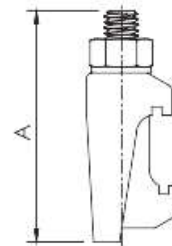
ISO Double Wall Clamps



Unit= mm

Size	Parts No	Dimensions		
		B	C	Thread Siz
ISO63-100	MVI-1302	45.00	M8	M8*45L
ISO160-250	MVI-1302	45.00	M10	M10*45L
ISO320-500	MVI-1302	60.00	M12	M12*45L

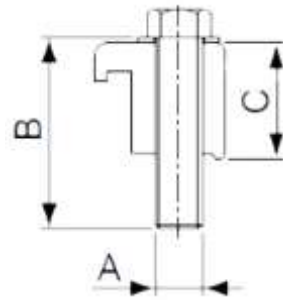
ISO Double Claw Clamps



Unit= mm

Size	Parts No	Dimension	
		A	Bolt Size
ISO63-250	MVI-1303	61.50	M10
ISO320-500	MVI-1303	76.00	M12
ISO630	MVI-1303	86.00	M12

ISO Single Wall Clamp

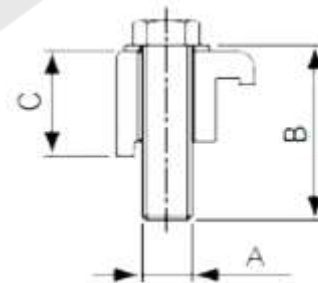


*MATERIAL: 304/ Steel+Zn Plated

Unit= mm

Size	Parts No	Dimension		
		A	B	C
ISO63-100	MVI-1304	M8	35.00	23.00
ISO160-250	MVI-1304	M10	35.00	23.00
ISO320-500	MVI-1304	M12	50.00	30.00

ISO Single Wall Clamp

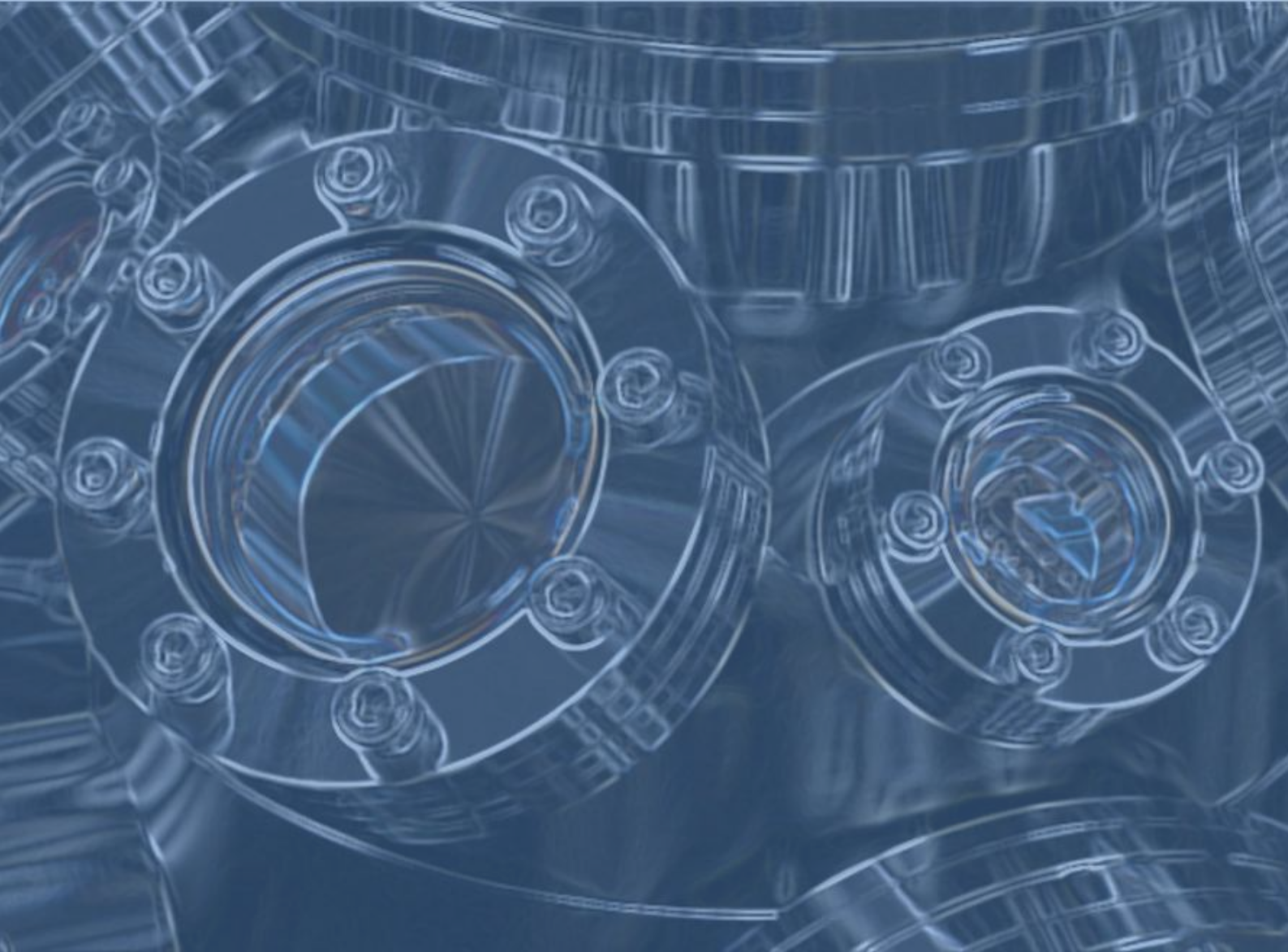


*MATERIAL: Aluminum

Unit= mm

Size	Parts No	Dimension		
		A	B	C
ISO63-100	MVI-1304	M8	35.00	23.50
ISO160-250	MVI-1304	M10	35.00	23.50
ISO320-500	MVI-1304	M12	50.00	30.00

ConFlat Flanges and



Vacuum Fittings CF Series

The English name of CF flange is Conflat Flange. It is a flange connection used in ultra-high vacuum, a metal static seal that can withstand high temperature baking. Nominal diameters include DN16, 40, 63, 100, 160, 200, 250 and other sizes. The applicable vacuum degree is up to 10-12mbar, and the flange sealing material is usually Viton, PTFE, oxygen-free copper, etc. Flanges are usually 304, 316 stainless steel, etc.

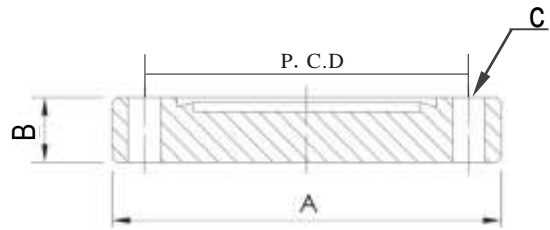


Specifications

Blanks&Flanges	:304(other material available upon request) Gaskets
	:OFHC Copper or Viton
Bolt	304
O Ring material	:OFHC Copper Or Silver Plated
Temperature Range	:-200°~450°(OFHC Copper)
Vacuum Rate	:1 bar to 10 ⁻¹³ torr
Torque Rating	:CF35 and smller 220 kgf-cm CF63 and langer 360 kgf-cm

- Larger or special size available upon request

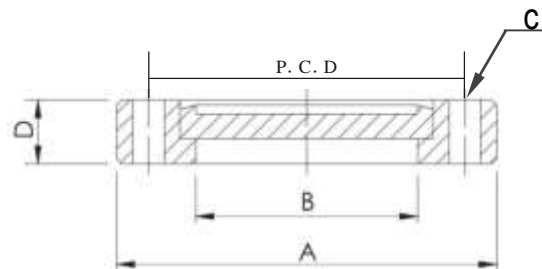
CF Blank Flange Fixed



Unit= mm

Size	Parts No	Dimensions			
		A	B	C	P. C. D
CF16	MVC-12707	33.80	7.50	4.4*6	26.90
CF35	MVC-12707	69.50	12.70	6.7*6	58.70
CF63	MVC-12707	113.60	18.00	8.4*8	92.10
CF100	MVC-12707	151.60	20.00	8.4*16	130.30
CF150	MVC-12707	202.50	22.00	8.4*20	181.00
CF200	MVC-12707	253.20	24.70	8.4*24	231.80
CF250	MVC-12707	304.00	28.50	8.4*32	294.00
CF300	MVC-12707	355.60	28.50	10.3*30	325.70
CF350	MVC-12707	419.10	28.50	10.3*36	388.90

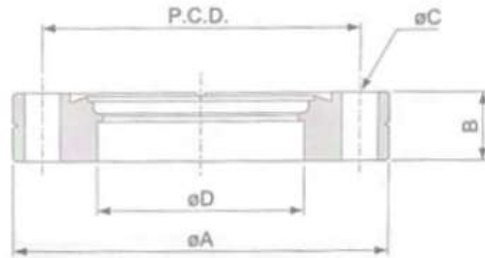
CF Blank Flange Rotatable



Unit= mm

Size	Parts No	Dimensions			
		A	B	C	P. C. D
CF16	MVC-12708	33.80	19.41	4.4*6	26.90
CF35	MVC-12708	69.50	48.31	6.7*6	58.70
CF63	MVC-12708	113.60	72.39	8.4*8	92.10
CF100	MVC-12708	151.60	106.17	8.4*16	130.30
CF150	MVC-12708	202.50	155.70	8.4*20	181.00
CF200	MVC-12708	253.20	208.28	8.4*24	231.80
CF250	MVC-12708	304.00	276.30	8.4*32	284.00
CF300	MVC-12708	355.60	305.82	10.3*30	325.70
CF350	MVC-12708	419.10	359.61	10.3*36	388.90

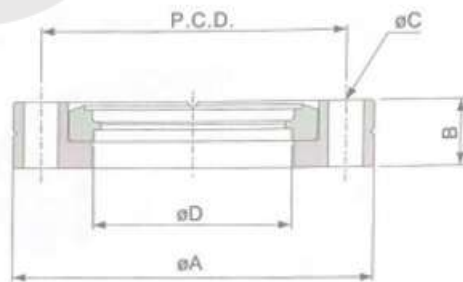
CF Bored Flange Fixed



Unit= mm

Size	Parts No	Dimensions				
		A	B	C	D	P. C. D
CF35B25	MVC-12701	69.50	12.70	6.7*6	25.60	58.70
CF35B38	MVC-12701	69.50	12.70	6.7*6	38.30	58.70
CF35B42	MVC-12701	69.50	12.70	6.7*6	42.90	58.70
CF63B51	MVC-12701	113.60	18.00	8.4*8	51.10	92.10
CF63B63	MVC-12701	113.60	18.00	8.4*8	63.70	92.10
CF100	MVC-12701	151.60	20.00	8.4*16	101.80	130.30
CF150	MVC-12701	202.50	22.00	8.4*20	153.10	181.00
CF200	MVC-12701	253.20	24.70	8.4*24	203.70	231.80
CF250	MVC-12701	304.00	28.50	8.4*32	255.00	284.00
CF300	MVC-12701	355.60	28.50	10.3*30	305.40	325.70
CF350	MVC-12701	419.10	28.50	10.3*36	356.10	388.90

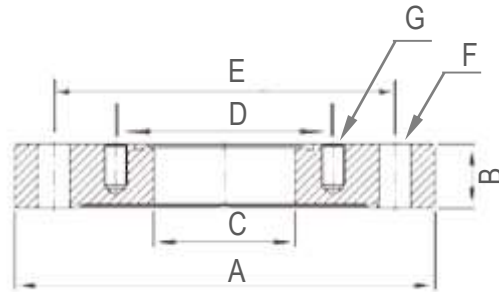
CF Bored Flange Rotatable



Unit= mm

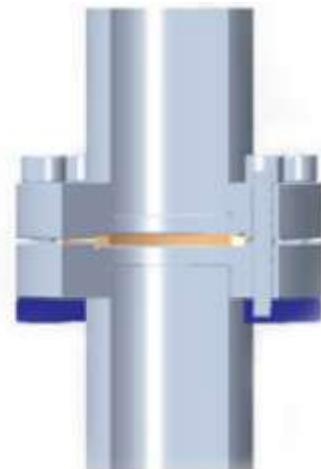
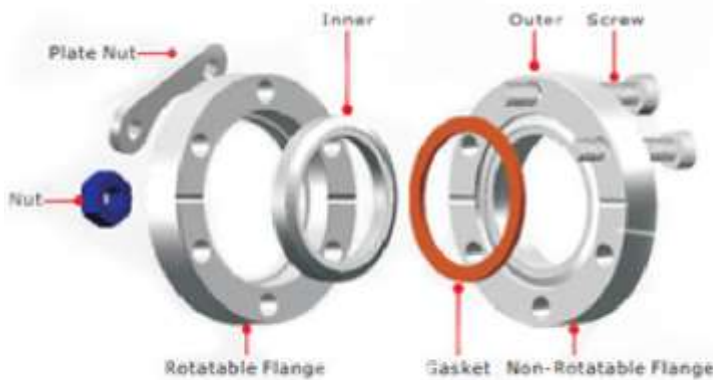
Size	Parts No	Dimensions				
		A	B	C	D	P. C. D
CF35B25	MVC-12702	69.50	12.70	6.7*6	25.60	58.70
CF35B38	MVC-12702	69.50	12.70	6.7*6	38.30	58.70
CF35B42	MVC-12702	69.50	12.70	6.7*6	42.90	58.70
CF63B51	MVC-12702	113.60	18.00	8.4*8	51.10	92.10
CF63B63	MVC-12702	113.60	18.00	8.4*8	63.70	92.10
CF100	MVC-12702	151.60	20.00	8.4*16	101.80	130.30
CF150	MVC-12702	202.50	22.00	8.4*20	153.10	181.00
CF200	MVC-12702	253.20	24.70	8.4*24	203.70	231.80
CF250	MVC-12702	304.00	28.50	8.4*32	255.00	284.00
CF300	MVC-12702	355.60	28.50	10.3*30	305.40	325.70
CF350	MVC-12702	419.10	28.50	10.3*36	356.10	388.90

CF Reducing Flange- Zero Length Reducer

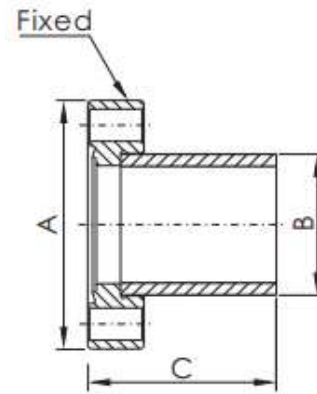


Unit= mm

Size	Parts No.	Dimensions						
		A	B	C	D	E	F	G
CF35RF16	MVC-12704	69.50	12.70	15.80	26.90	58.70	6.7*6	M4*6
CF63RF16	MVC-12704	113.60	18.00	15.80	26.90	92.10	8.4*8	M4*6
CF63RF35	MVC-12704	113.60	18.00	38.10	58.70	92.10	8.4*8	M6*6
CF100RF35	MVC-12704	151.60	20.00	38.10	58.70	130.30	8.4*16	M6*6
CF100RF63	MVC-12704	151.60	20.00	63.50	92.10	130.30	8.4*16	M8*8
CF150RF35	MVC-12704	202.50	22.00	38.10	58.70	181.00	8.4*20	M6*6
CF150RF63	MVC-12704	202.50	22.00	63.50	92.10	181.00	8.4*20	M8*8
CF150RF100	MVC-12704	202.50	22.00	101.60	130.30	181.00	8.4*20	M8*16
CF200RF35	MVC-12704	253.20	24.70	38.10	58.70	231.80	8.4*24	M6*6
CF200RF63	MVC-12704	253.20	24.70	63.50	92.10	231.80	8.4*24	M8*8
CF200RF100	MVC-12704	253.20	24.70	101.60	130.30	231.80	8.4*24	M8*16
CF200RF150	MVC-12704	253.20	24.70	152.40	181.00	231.80	8.4*24	M8*20
CF250RF35	MVC-12704	336.50	28.50	38.10	58.70	306.50	10.3*30	M6*6
CF250RF63	MVC-12704	336.50	28.50	63.50	92.10	306.50	10.3*30	M8*8
CF250RF100	MVC-12704	336.50	28.50	101.60	130.30	306.50	10.3*30	M8*16
CF250RF150	MVC-12704	336.50	28.50	152.40	181.00	306.50	10.3*30	M8*20
CF250RF200	MVC-12704	336.50	28.50	203.20	231.80	306.50	10.3*30	M8*24



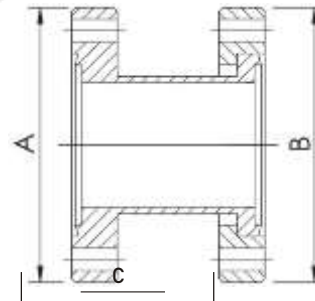
CF Half Nipple



Unit= mm

Size	Parts No.	Dimensions		
		A	B	C
CF16	MVC-12901	33.80	19.05	38.00
CF35	MVC-12901	69.50	38.10	63.00
CF63	MVC-12901	113.60	63.50	105.00
CF100	MVC-12901	151.60	101.60	135.00
CF150	MVC-12901	202.50	152.40	167.00
CF200	MVC-12901	253.20	203.20	167.00

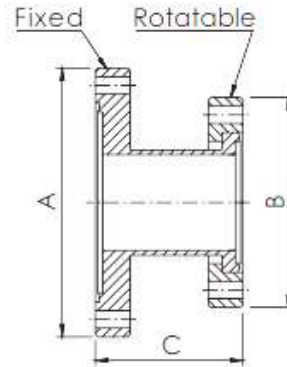
CF Full Nipples



Unit= mm

Size	Parts No	Dimensions		
		A	B	C
CF16	MVC-12705	16.00	16.00	200/OPTION
CF35	MVC-12705	35.00	35.00	200/OPTION
CF50	MVC-12705	50.00	50.00	200/OPTION
CF63	MVC-12705	63.00	63.00	200/OPTION
CF100	MVC-12705	100.00	100.00	200/OPTION
CF160	MVC-12705	150.00	150.00	200/OPTION
CF200	MVC-12705	200.00	200.00	200/OPTION

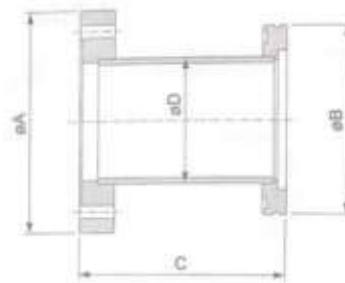
CF Reducing Adaptor



Fix Or Small Flange Rotatable

Size	Parts No.	Dimensions			
		A	B	C	D
CF35R-16R	MVC-12921	69.50	33.80	76.20	19.05
CF63R-16R	MVC-12921	113.60	33.80	76.20	19.05
CF63R-35R	MVC-12921	113.60	69.50	76.20	38.10
CF100R-35R	MVC-12921	151.60	69.50	76.20	38.10
CF100R-63R	MVC-12921	151.60	113.60	76.20	63.50
CF150R-35R	MVC-12921	202.50	69.50	76.20	38.10
CF150R-63R	MVC-12921	202.50	113.60	76.20	63.50
CF150R-100R	MVC-12921	202.50	151.60	76.20	101.60

CF-ISO Tubulated Adaptor

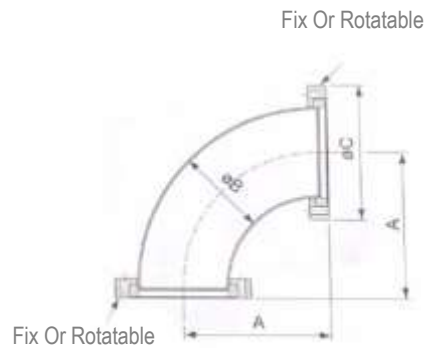


Size	Parts No.	Dimensions			
		A	B	C	D
CF63S-ISO63A	MVC-12922	113.60	95.00	90.00	63.50
CF100S-ISO63A	MVC-12922	151.60	95.00	90.00	63.50
CF100S-ISO100A	MVC-12922	151.60	130.00	90.00	101.60
ISO160C-ISO100A	MVC-12922	151.60	180.00	90.00	101.60
CF150S-ISO63A	MVC-12922	202.50	95.00	90.00	63.50
CF150S-ISO100A	MVC-12922	202.50	130.00	90.00	101.60
ISO160C-ISO150A	MVC-12922	202.50	180.00	90.00	152.40

CF Elbow 90°



Fixed Or Rotatable



Unit= mm

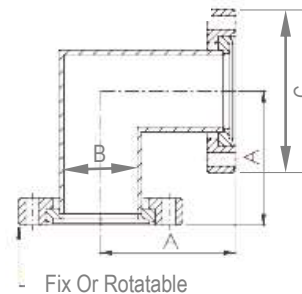
Size	Parts No.	Dimensions		
		A	B	C
CF16	MVC-12706	37.50	19.05	33.80
CF35	MVC-12706	79.90	38.10	69.50
CF63	MVC-12706	141.30	63.50	113.60
CF100	MVC-12706	222.20	101.60	151.60
CF150	MVC-12706	241.30	152.40	202.50

CF Elbow 90°



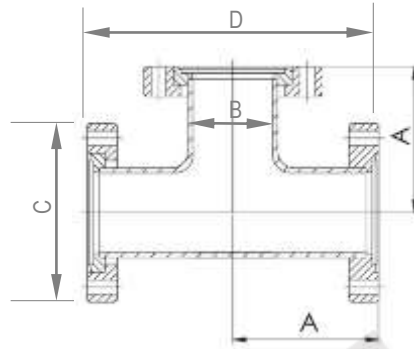
Fixed Or Rotatable

Fix Or Rotatable



Size	Parts No.	Dimensions		
		A	B	C
CF16	MVC-12707	37.50	19.05	33.80
CF35	MVC-12707	79.90	38.10	69.50
CF63	MVC-12707	141.30	63.50	113.60
CF100	MVC-12707	222.20	101.60	151.60
CF150	MVC-12707	241.30	152.40	202.50

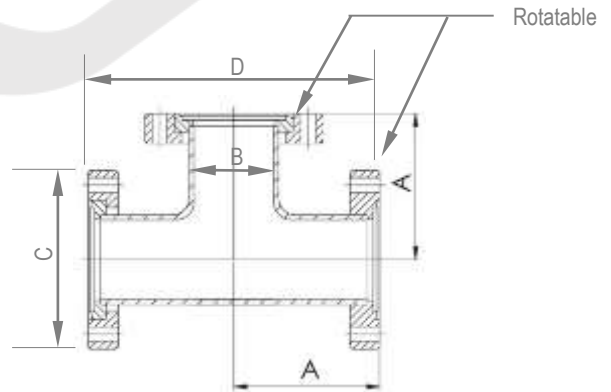
CF Tee- Fixed



Unit= mm

Size	Parts No.	Dimensions			
		A	B	C	D
CF16	MVC-12703	37.50	19.05	33.80	75.00
CF35	MVC-12703	62.50	38.10	69.50	125.00
CF63	MVC-12703	85.70	63.50	113.60	171.40
CF100	MVC-12703	109.50	101.60	151.60	219.00
CF150	MVC-12703	139.70	152.40	202.50	279.40

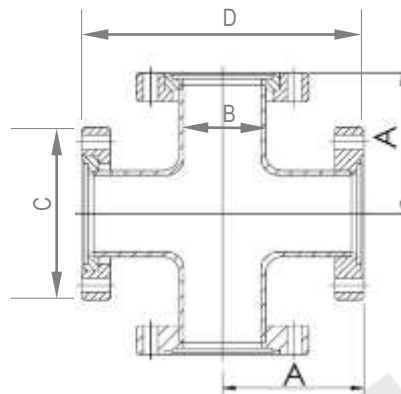
CF Tee- Two Flange Rotatable



Unit= mm

Size	Parts No.	Dimensions			
		A	B	C	D
CF16	MVC-12703	47.20	19.05	33.80	94.40
CF35	MVC-12703	62.50	38.10	69.50	125.00
CF63	MVC-12703	85.70	63.50	113.60	171.40
CF100	MVC-12703	109.50	101.60	151.60	219.00
CF150	MVC-12703	139.70	152.40	202.50	279.40

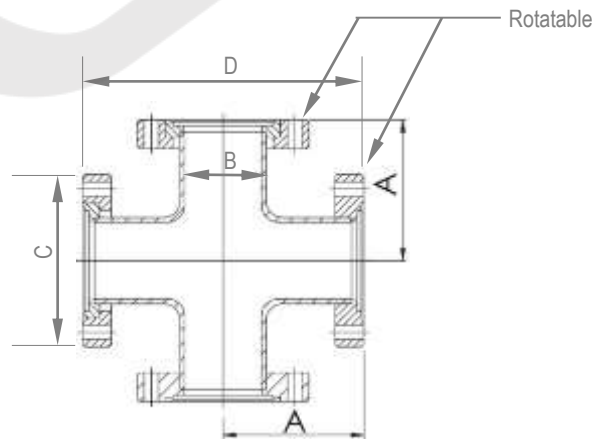
CF Cross



Unit= mm

Size	Parts No.	Dimensions			
		A	B	C	D
CF16	MVC-12704	37.50	19.05	33.80	75.00
CF35	MVC-12704	62.50	38.10	69.50	125.00
CF63	MVC-12704	85.70	63.50	113.60	171.40
CF100	MVC-12704	109.50	101.60	151.60	219.00
CF150	MVC-12704	139.70	152.40	202.50	279.40

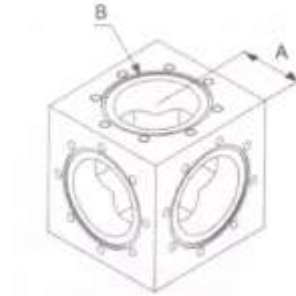
CF Cross



Unit= mm

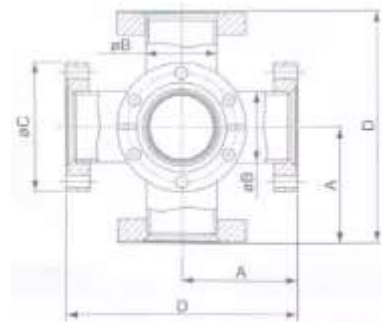
Size	Parts No.	Dimensions			
		A	B	C	D
CF16	MVC-12704	47.20	19.05	33.80	94.40
CF35	MVC-12704	62.50	38.10	69.50	125.00
CF63	MVC-12704	85.70	63.50	113.60	171.40
CF100	MVC-12704	109.50	101.60	151.60	219.00
CF150	MVC-12704	139.70	152.40	202.50	279.40

CF CUBES with Fractional Thread



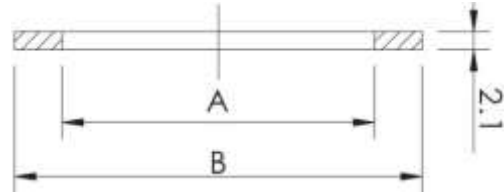
Size	Parts No	A	B	Thread Size	Thread Depth
CF16	MVC-29024	17.25	15.70	8-32	6.35
CF35	MVC-29044	35.05	38.10	250-28	9.40
CF50	MVC-29064	43.00	50.80	312-24	9.40
CF63	MVC-29074	56.65	63.50	312-24	12.70
CF100	MVC-29094	76.20	102.00	312-24	12.70
CF150	MVC-290114	101.60	152.40	312-24	12.70
CF200	MVC-290134	127.00	203.20	312-24	12.70

CF Six-Way Crosses



Size	Parts No	A	B	C	D
CR16	MVC-28024	37.50	19.05	33.80	75.00
CR35	MVC-28024	62.50	38.10	69.50	125.00
CR63	MVC-28024	85.70	63.50	113.60	171.40
CR100	MVC-28024	109.50	101.60	151.60	219.00
CR150	MVC-28024	139.70	152.40	202.50	279.40

CF OFHC-copper



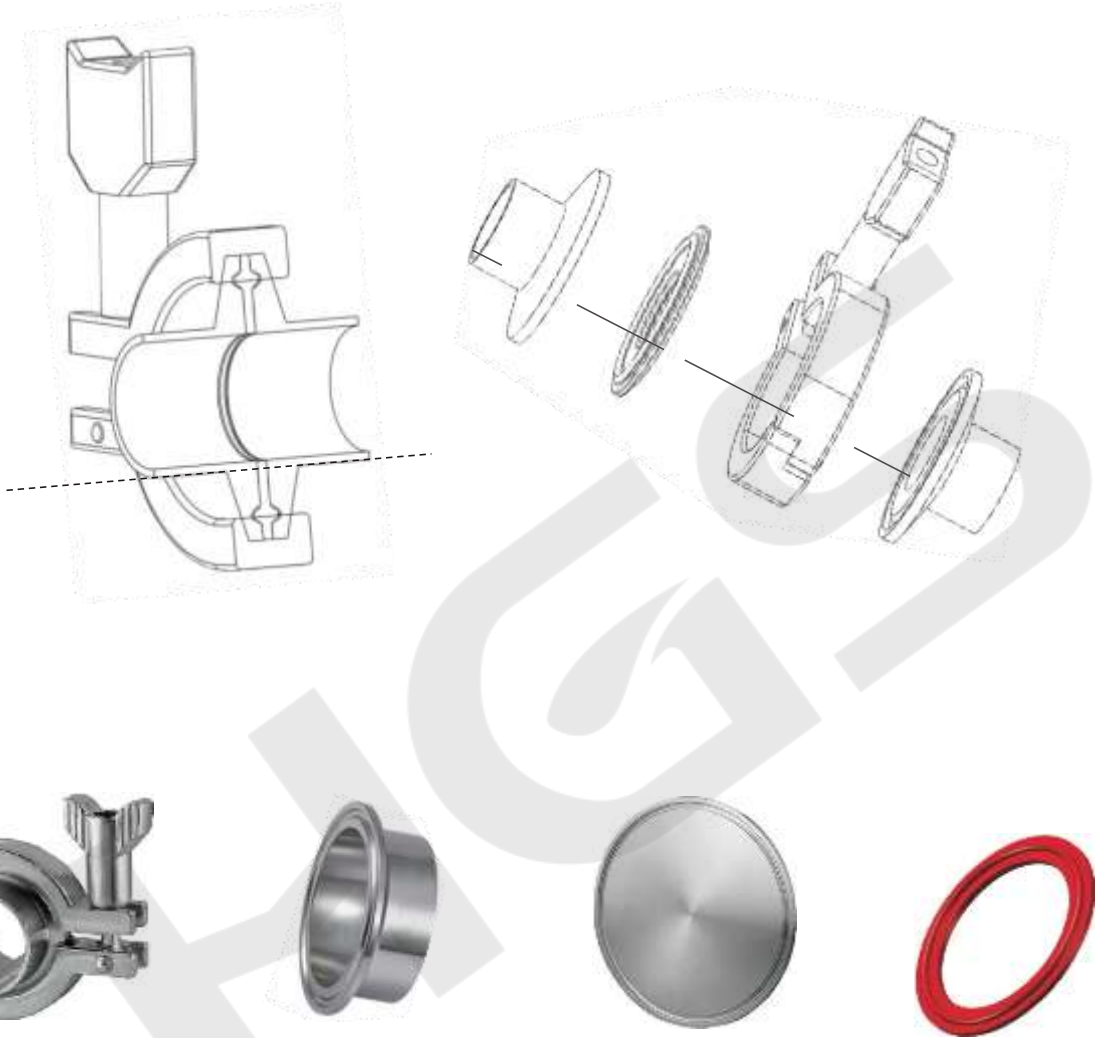
Unit= mm

Size	Parts No	Dimensions	
		A	B
CF16	MVC-12715	16.20	21.25
CF25	MVC-12715	25.65	32.77
CF35	MVC-12715	36.80	48.10
CF40	MVC-12715	39.00	48.10
CF50	MVC-12715	51.05	61.60
CF63	MVC-12715	63.60	82.35
CF80	MVC-12715	76.45	91.39
CF100	MVC-12715	101.80	120.45
CF130	MVC-12715	127.25	141.40
CF160	MVC-12715	152.60	171.25
CF200	MVC-12715	203.40	222.05



- For more CF series, please contact our customer service staff.

Sanitary pipe And Fittings Series

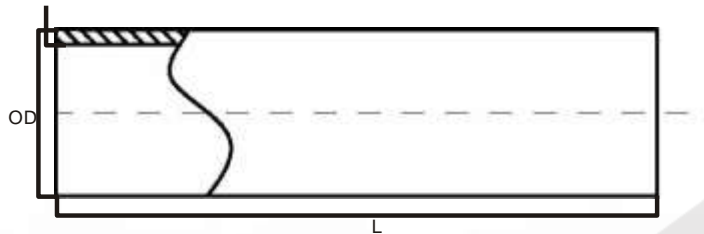


Specifications

Blanks	:304(other material available upon request)
Flanges	:304(other material available upon request)
Fittings	:304(other material available upon request)
Clamps	304
Ferrule Gaskets	:EPDM(NBR/Viton/Silicone)
Temperature Range	:135°(EPDM) 200°(Viton) 100°(NBR) 230°(Silicone)

- Larger or special size available upon request

Sanitary pipe And Fittings Series



SMS Sanitary Pipes

Unit= mm

Size	Parts NO	Outer Diameter OD	Thickness T	Llength L(M)
25.0	MSF- 41501	25.0	1.2	6
38.0	MSF- 41501	38.0	1.2	6
51.0	MSF- 41501	51.0	1.2	6
63.0	MSF- 41501	63.0	1.6	6
76.0	MSF- 41501	76.0	1.6	6
101.6	MSF- 41501	101.6	2.0	6
104.0	MSF- 41501	104.0	2.0	6

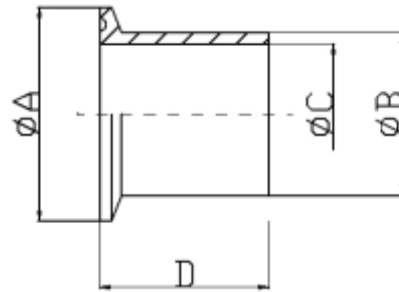
3A Sanitary Pipes

Unit= mm

Size	Parts NO	Outer Diameter OD	Thickness T	Llength L(M)
1"	MT- 41502	25.4	1.65	6
1.5"	MT- 41502	38.1	1.65	6
2"	MT- 41502	50.8	1.65	6
2.5"	MT- 41502	63.5	1.65	6
3"	MT- 41502	76.2	1.65	6
4"	MT- 41502	101.6	2.11	6

■ 抛光等级依客户需求 另有DIN/BPE规格提供
Polishing grade according to customer needs

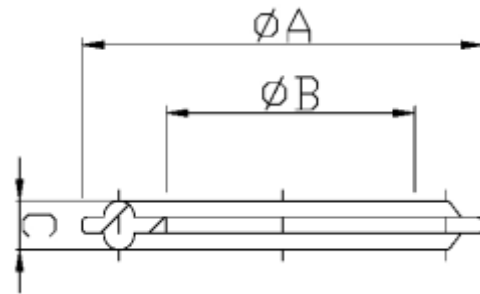
Ferrules



Unit= mm

Size	Parts NO	A	B	C	D
1/4	MSF-41514	25.00	6.35	4.74	44.50
3/8	MSF-41514	25.00	9.53	5.77	44.50
1/2	MSF-41514	25.00	12.70	9.40	44.50
3/4	MSF-41514	25.00	19.05	15.75	44.50
1	MSF-41514	50.40	25.40	22.10	44.50
1.5	MSF-41514	50.40	38.10	34.80	44.50
2	MSF-41514	63.90	50.80	47.50	57.20
2.5	MSF-41514	77.50	63.50	60.20	57.20
3	MSF-41514	90.90	76.20	72.90	57.20
4	MSF-41514	118.90	101.60	97.40	57.20
6	MSF-41514	166.90	125.40	146.86	76.20

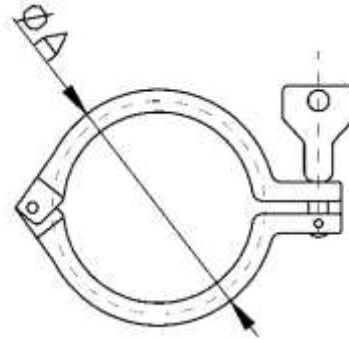
Ferrules Gaskets



Unit= mm

Size	Parts NO	A	B	C
0.50	MSF-41515	21.70	9.60	4.50
0.75	MSF-41515	21.70	16.00	4.50
1.00	MSF-41515	50.40	22.40	5.50
1.50	MSF-41515	50.40	35.00	5.50
2.00	MSF-41515	63.90	47.80	5.50
2.50	MSF-41515	77.50	60.50	5.50
3.00	MSF-41515	90.90	73.10	5.50
4.00	MSF-41515	118.90	97.80	5.50

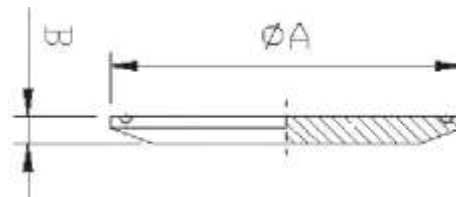
Heavy Duty Clamps



Unit= mm

Size	Parts NO	Parts NO
1/2	MSF-41513	28.4
3/4	MSF-41513	28.4
1	MSF-41513	53.9
1.5	MSF-41513	53.9
2	MSF-41513	67.4
2.5	MSF-41513	80.9
3	MSF-41513	94.4
4	MSF-41513	122.4
6	MSF-41513	170.4

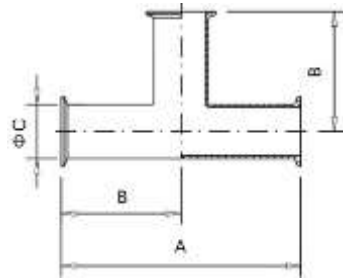
Blank



Unit= mm

Size	Parts NO	A	B
1/2	MSF-41526	25	6.35
3/4	MSF-41526	25	6.35
1	MSF-41526	50.4	6.35
1.5	MSF-41526	50.4	6.35
2	MSF-41526	63.9	6.35
2.5	MSF-41526	77.5	6.35
3	MSF-41526	90.9	6.35
4	MSF-41526	118.9	7.9
6	MSF-41526	166.9	11.1

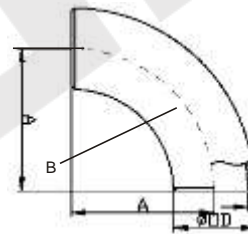
Tees With Ferrule



Unit= mm

Size	Parts NO	A	B
25.0	MSF- 53378	135.4	67.7
38.0	MSF- 53378	165.4	82.7
51.0	MSF- 53378	189.4	94.7
63.0	MSF- 53378	235.4	117.7
76.0	MSF- 53378	245.4	122.7
101.6	MSF- 53378	331.6	165.8
104.0	MSF- 53378	331.6	165.8

90 Deg Elbows

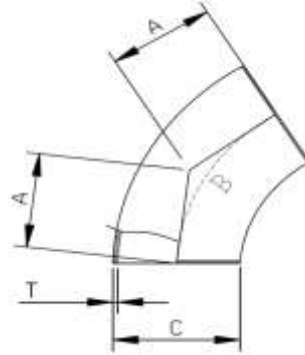


Unit= mm

Size	Parts NO	A	B	OD
1/2	MSF-41506	19.1	19.1	12.7
3/4	MSF-41506	28.6	28.6	19.1
1	MSF-41506	38.1	38.1	25.4
1.5	MSF-41506	57.2	57.2	38.1
2	MSF-41506	76.2	76.2	50.8
2.5	MSF-41506	95.3	95.3	63.5
3	MSF-41506	114.3	114.3	76.2
4	MSF-41506	152.4	152.4	101.6
6	MSF-41506	228.6	228.6	152.4



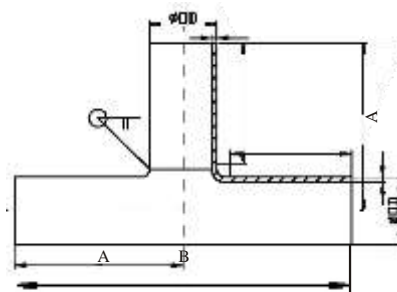
45 Deg Elbows



Unit= mm

Size	Parts NO	A	B	C
1/2	MSF-41516	7.95	19.1	12.7
3/4	MSF-41516	11.9	28.6	19.1
1	MSF-41516	15.8	38.1	25.4
1.5	MSF-41516	23.7	57.2	38.1
2	MSF-41516	31.6	76.2	50.8
2.5	MSF-41516	39.7	95.3	63.5
3	MSF-41516	47.4	114.3	76.2
4	MSF-41516	63.1	152.4	101.6

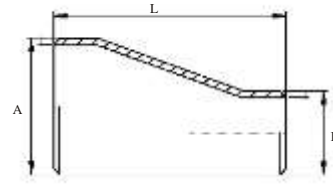
Tees



Unit= mm

Size	Parts NO	A	B	OD
1	MSF-41503	28.6	57.2	25.4
1.5	MSF-41503	42.1	84.1	38.1
2	MSF-41503	52.4	104.7	50.8
2.5	MSF-41503	59.6	119.1	63.5
3	MSF-41503	65.9	131.8	76.2
4	MSF-41503	87.4	174.7	101.6

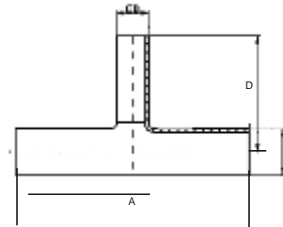
Eccentric Reducers



Unit= mm

Size	Parts NO	A	B	L
1.0x1/2	MSF-41515	25.4	12.7	38.1
1.0x3/8	MSF-41515	25.4	9.53	38.1
1.0x3/4	MSF-41515	25.4	19.1	25.4
2.0 x 1/2	MSF-41515	50.8	12.7	114.3
2.0 x 3/4	MSF-41515	50.8	19.1	101.6
2.0 x 1.0	MSF-41515	50.8	25.4	101.6
2.0 x 1.5	MSF-41515	50.8	38.1	50.8
2.5 x 1.0	MSF-41515	63.5	25.4	152.4
2.5 x 1.5	MSF-41515	63.5	38.1	101.6
2.5 x 2.0	MSF-41515	63.5	50.8	50.8
3.0 x 1.0	MSF-41515	76.2	25.4	215.9
3.0 x 1.5	MSF-41515	76.2	38.1	228.6
3.0 x 2.0	MSF-41515	76.2	50.8	203.2
3.0 x 2.5	MSF-41515	76.2	63.5	152.4
3.0x2.0	MSF-41515	76.2	50.8	101.6
3.0x2.5	MSF-41515	76.2	63.5	50.8

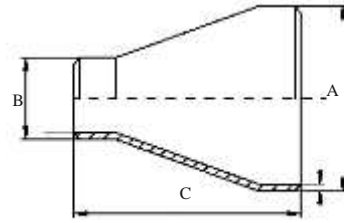
Eccentric Tees



Unit= mm

Size	Parts NO	A	B	OD	D
1.5x1.0	MSF-41513	84.1	38.1	25.4	34.9
2.0x1.0	MSF-41513	104.8	50.8	25.4	41.3
2.0x1.5	MSF-41513	104.8	50.8	38.1	48.4
2.5x1.0	MSF-41513	119.1	63.5	25.4	47.6
2.5x1.5	MSF-41513	119.1	63.5	38.1	54.8
2.5x2.0	MSF-41513	119.1	63.5	50.8	58.7
3.0x1.0	MSF-41513	131.8	76.2	25.4	61.1
3.0x1.5	MSF-41513	131.8	76.2	38.1	61.1
3.0x2.0	MSF-41513	131.8	76.2	50.8	65.1
3.0x2.5	MSF-41513	131.8	76.2	63.5	65.9

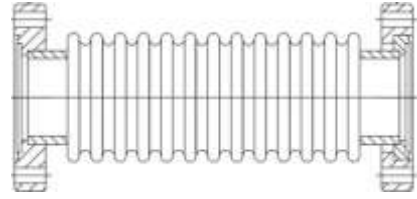
Concentric Reducers



Unit=
mm

Size	Parts NO	A	B	C
1.0 x 1/2	MSF-41505	25.4	12.7	38.1
1.0 x 3/8	MSF-41505	25.4	9.53	38.1
1.0 x 3/4	MSF-41505	25.4	19.1	25.4
1.5 x 1/2	MSF-41505	38.1	12.7	63.5
1.5 x 3/4	MSF-41505	38.1	19.1	50.8
1.5 x 1.0	MSF-41505	38.1	25.4	50.8
2.0 x 1/2	MSF-41505	50.8	12.7	114.3
2.0 x 3/4	MSF-41505	50.8	19.1	101.6
2.0 x 1.0	MSF-41505	50.8	25.4	101.6
2.0 x 1.5	MSF-41505	50.8	38.1	50.8
2.5 x 1.0	MSF-41505	63.5	25.4	152.4
2.5 x 1.5	MSF-41505	63.5	38.1	101.6
2.5 x 2.0	MSF-41505	63.5	50.8	50.8
3.0 x 1.0	MSF-41505	76.2	25.4	203.2
3.0 x 1.5	MSF-41505	76.2	38.1	152.4
3.0 x 2.0	MSF-41505	76.2	50.8	101.6
3.0 x 2.5	MSF-41505	76.2	63.5	50.8
4.0 x 1.0	MSF-41505	101.6	25.4	304.8
4.0 x 1.5	MSF-41505	101.6	38.1	254
4.0 x 2.0	MSF-41505	101.6	50.8	203.2
4.0 x 2.5	MSF-41505	101.6	63.5	152.4
4.0 x 3.0	MSF-41505	101.6	76.2	101.6
5.0 x 4.0	MSF-41505	127	101.6	70
6.0 x 3.0	MSF-41505	152.4	76.2	241.3
6.0 x 4.0	MSF-41505	152.4	101.6	139.7

CF Bellows



Unit= mm

Size	Parts No	Dimensions	
		Wall Thickness	L
CF16	MVB-11101	0.15	100/OPTION
CF35	MVB-11101	0.15	100/OPTION
CF50	MVB-11101	0.15	100/OPTION
CF63	MVB-11101	0.15	100/OPTION
CF100	MVB-11101	0.15	100/OPTION

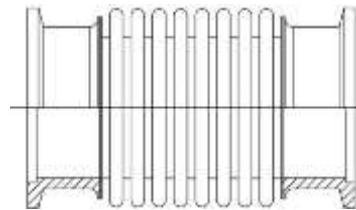
ISO Bellows



Unit= mm

Size	Parts No	Dimensions	
		Wall Thickness	L
ISO63	MVB-11102	0.15	100/OPTION
ISO80	MVB-11102	0.15	100/OPTION
ISO100	MVB-11102	0.15	100/OPTION
ISO160	MVB-11102	0.15	100/OPTION
ISO200	MVB-11102	0.15	100/OPTION

KF Bellows



Unit= mm

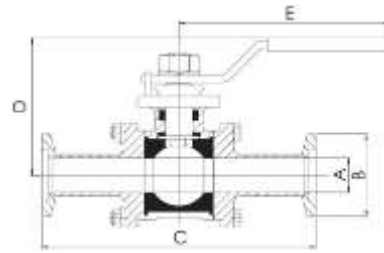
Size	Parts No	Dimensions	
		Wall Thickness	L
KF16	MVB-11103	0.15	100/OPTION
KF25	MVB-11103	0.15	100/OPTION
KF40	MVB-11103	0.15	100/OPTION
KF50	MVB-11103	0.15	100/OPTION

Edge Welded Bellow



- In addition to Hydroformed Vacuum Bellows, vacuum bellows in the form of welded edge can also be provided. Please contact us for detailed specifications.

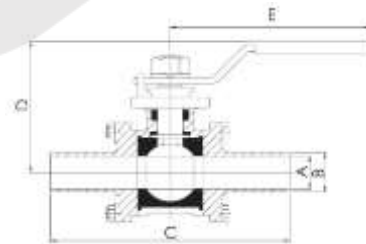
Ball Valves-KF Flanges



Unit= mm

Size	Parts No	Dimensions				
		A	B	C	D	E
KF16	MBV-50701	15.5	30	109.8	58	132
KF25	MBV-50701	22.1	40	122.4	62	132
KF40	MBV-50701	34.8	55	147.3	98	175
KF50	MBV-50701	47.5	75	165.7	104	175

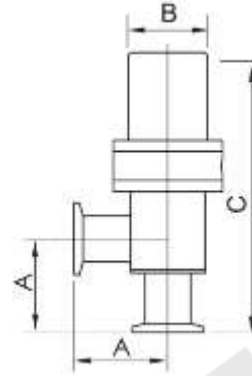
Ball Valves-Tube Ends



Unit= mm

Size	Parts No	Dimensions				
		A	B	C	D	E
1/2"	MBV-50711	10.21	12.7	70.6	48.4	132
3/4"	MBV-50711	15.75	19.05	88.3	61.35	132
1.0"	MBV-50711	22.1	25.4	104.93	72.1	175
1.5"	MBV-50711	34.8	38.1	111.67	76.1	175
2.0"	MBV-50711	47.5	50.8	132.18	89.81	202
2.5"	MBV-50711	60.2	63.5	144.06	98.15	202
3.0"	MBV-50711	72.9	76.2	165.63	110.25	202
4.0"	MBV-50711	97.4	101.6	254.93	165.15	330
6"	MBV-50711	146.86	211	339.05	211	500

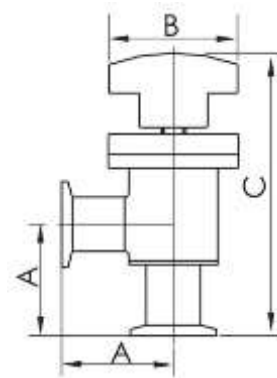
KF/ISO Pneumatically Actuated Angle Valves



Unit= mm

Size	Parts No	Dimensions		
		A	B	C
KF16	MAV-50702	40	30	139
KF25	MAV-50702	50	30	164
KF40	MAV-50702	57	55	187
KF50	MAV-50702	75	75	230
ISO63	MAV-50702	88	102	240
ISO80	MAV-50702	88	132	288
ISO100	MAV-50702	108	152	324
ISO160	MAV-50702	138	228	450
ISO200	MAV-50702	200	249	520

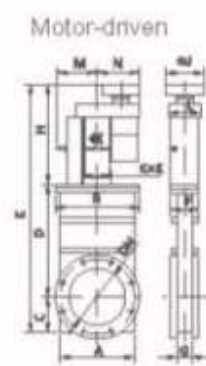
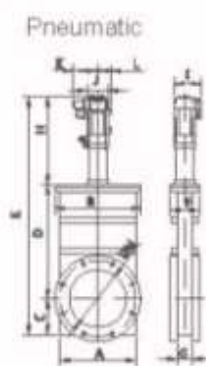
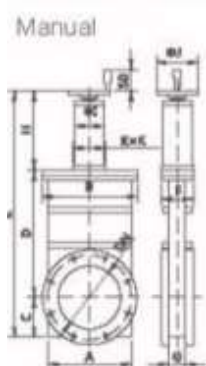
KF Manually Operated Angle Valves



Unit= mm

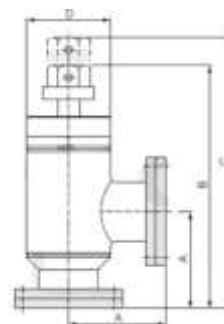
Size	Parts No	Dimensions		
		A	B	C
KF16	MAV-50712	40	50	143
KF25	MAV-50712	50	63	168
KF40	MAV-50712	65	63	185
KF50	MAV-50712	75	63	200

Ultra-high Vacuum Gate Valve



DN (mm)	Weight/ kg											
	Manual Valves				Pneumatic Valves				Motor-driven Valves			
	CF	LF	ISO-F	GB-LP	CF	LF	ISO-F	GB-LP	CF	LF	ISO-F	GB-L
63	6.3	5.0	6.5	6.5	6.7	6.6	6.6	6.3	—	—	—	—
80	8.2	8.4	8.6	8.8	8.0	8.6	8.8	8.5	—	—	—	—
100	9.7	9.0	9.8	9.8	9.6	9.0	9.0	9.6	15.0	14.3	14.8	14.8
160	16.5	14.3	16.5	16.5	16.3	14.5	14.5	15.7	21.8	20.0	21.5	21.5
200	24.1	22.5	23.5	23.5	25.2	23.0	23.0	24.0	30.4	29.8	30.4	30.4
250	38.8	35.5	31.0	31.0	31.0	33.0	33.0	30.5	34.0	32.5	34.5	34.5
320	43.2	40.5	42.0	42.0	40.5	45.0	45.0	43.2	47.5	48.3	48.6	48.8
400	62.3	55.6	58.0	58.0	57.6	56.2	56.2	57.0	63.0	62.7	64.7	64.7

Ultra-high Vacuum Gate Valve



Size	Parts No	OD.	A	B	C	D
CR16-M	AVBAK-0903	19.05	38.1	121.2	131	38.1
CR35	AVBAK-1303	38.1	62.5	170	187	54
CR63	AVBAK-1503	63.5	105	266	294	76.2

Sapphire Viewport



YM sapphire viewport creates excellent optical quality. The average transmission of UV can reach up to 80%.

The sapphire viewport applicable vacuum range is up to 10-10 Torr and temperature range is from -100°C~450°C.



The sapphire viewport doesn't contain any magnetic permeability material, like Kovar steel, and won't distort the magnetic field.

The sapphire view port is applicable not only in general industry like heat treatment and vacuum coating, but also suitable in hi-tech industries, like semiconductor, optical, hi-energy physical research, ultra-high vacuum equipment, and optical or thermal monitor.

Ultimate pressure	1X 10 ⁻⁸ torr
Applicable temperature range	-100° C to 200° C
Window Material	Sapphire
UV Transmission	50% @ 250nm
Flange Material	S.S.304/316
Flange Type	KF ISO CF

Quartz (Fused Silica) Viewports



Quartz (Fused Silica) Viewports Features:

Built from the highest-quality materials to UHV standards

Compatible with vacuum systems capable of reaching UHV levels

Viewports may be sealed with fully annealed copper gaskets to reduce induced strain

If the process deposits material, we strongly recommend a viewport shutter because deposits can damage and impair the optical properties of the lens.

Kodial (7056 Glass) Viewports

Kodial Glass Viewports Features:

UHV compatibility

Large, distortion-free viewing area without interior voids, minimizing trapped volume and particulate

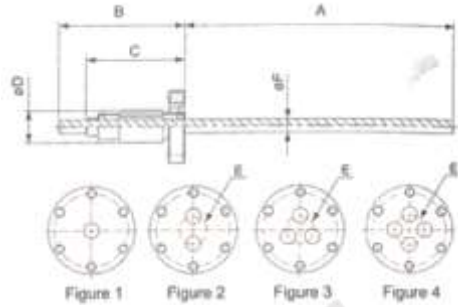
Commercial grade optical discs of fully annealed Kodial glass (alkali borosilicate 7056)

Kovar metal transition piece between glass and CF flange

Bakeout to 350°C (heating rate should not exceed 2-3° per minute)



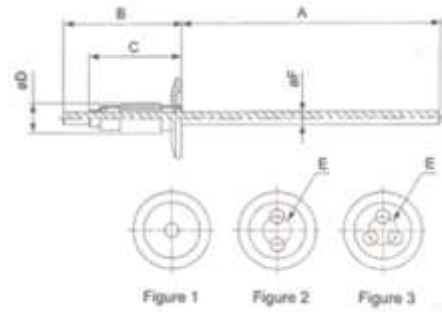
KF Electrical Feedthrough



Size	Parts No	No. Pins	Conductor Material	Voltage (kv)	Current (A)	Figure
CF16-1A	MVY-10021	1	OFHC	15	200	1
CF16-1B	MVY-10021	1	304 S.S	15	30	1
CF35-1A	MVY-10021	1	OFHC	15	200	1
CF35-2A	MVY-10021	2	OFHC	15	200	2
CF35-3A	MVY-10021	3	OFHC	15	200	3
CF35-4A	MVY-10021	4	OFHC	15	200	4
CF35-1B	MVY-10021	1	304 S.S	15	30	1
CF35-2B	MVY-10021	2	304 S.S	15	30	2
CF35-3B	MVY-10021	3	304 S.S	15	30	3
CF35-4B	MVY-10021	4	304 S.S	15	30	4

Size	Parts No	A	B	C	D	E	F
CF16-1A	MVY-10021	125.60	62.40	49.40	15.00	-	6.35
CF16-1B	MVY-10021	125.60	62.40	49.40	15.00	-	6.35
CF35-1A	MVY-10021	125.60	62.40	49.40	15.00	-	6.35
CF35-2A	MVY-10021	125.60	62.40	49.40	15.00	22	6.35
CF35-3A	MVY-10021	125.60	62.40	49.40	15.00	22	6.35
CF35-4A	MVY-10021	125.60	62.40	49.40	15.00	22	6.35
CF35-1B	MVY-10021	125.60	62.40	49.40	15.00	-	6.35
CF35-2B	MVY-10021	125.60	62.40	49.40	15.00	22	6.35
CF35-3B	MVY-10021	125.60	62.40	49.40	15.00	22	6.35
CF35-4B	MVY-10021	125.60	62.40	49.40	15.00	22	6.35

KF Electrical Feedthrough



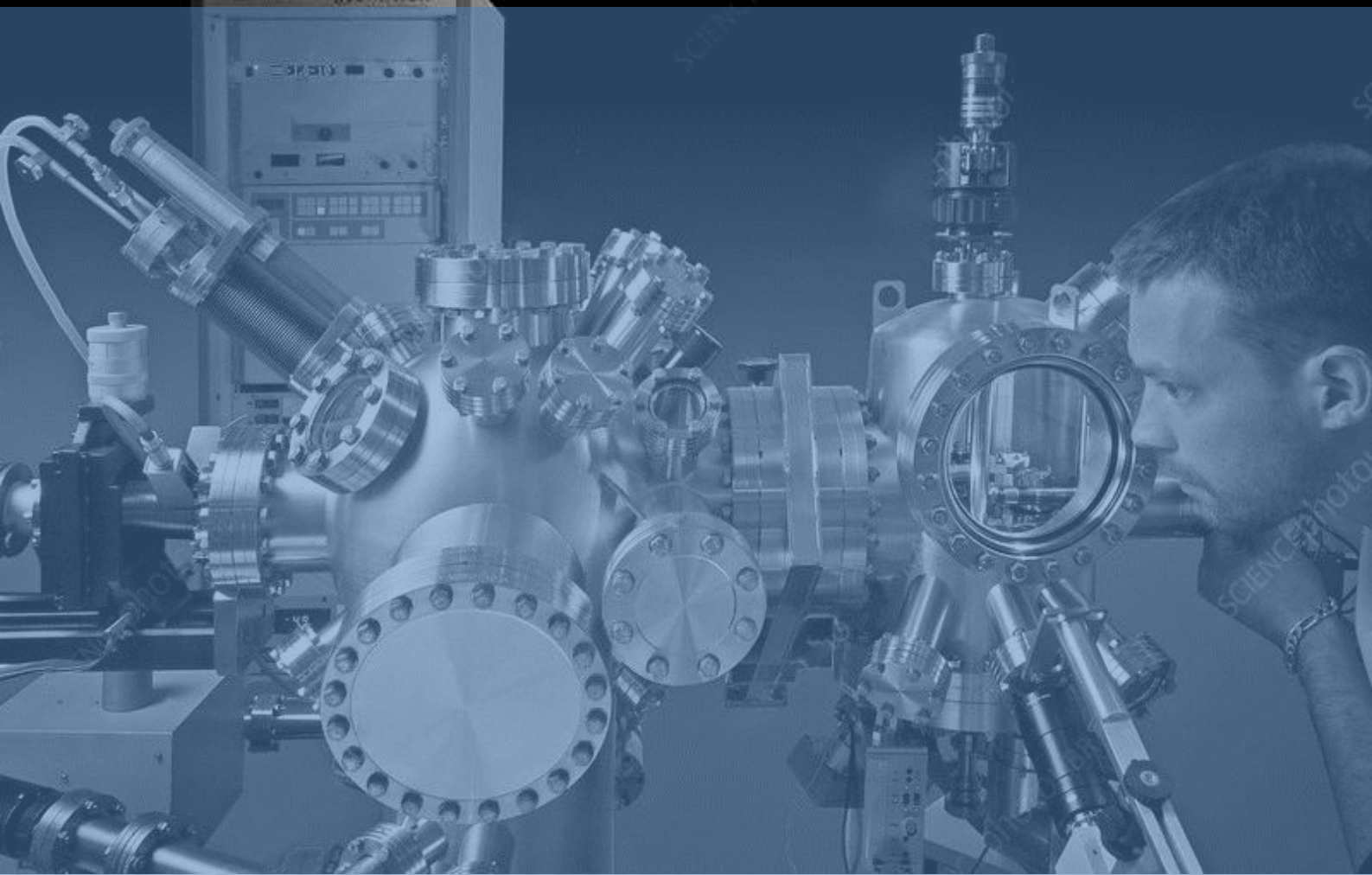
Size	Parts No	No. Pins	Conductor Material	Voltage (kv)	Current (A)	Figure
KF25-1A	MVY-10020	1	OFHC	15	200	1
KF25-1B	MVY-10020	1	304 S.S	15	30	1
KF40-1A	MVY-10020	1	OFHC	15	200	1
KF40-2A	MVY-10020	2	OFHC	15	200	2
KF40-3A	MVY-10020	3	OFHC	15	200	3
KF40-1B	MVY-10020	1	304 S.S	15	30	1
KF40-2B	MVY-10020	2	304 S.S	15	30	2
KF40-3B	MVY-10020	3	304 S.S	15	30	3

Size	Parts No	A	B	C	D	E	F
KF25-1A	MVY-10020	128.30	59.70	46.70	15.00	-	6.35
KF25-1B	MVY-10020	128.30	59.70	46.70	15.00	-	6.35
KF40-1A	MVY-10020	128.30	59.70	46.70	15.00	-	6.35
KF40-2A	MVY-10020	128.30	59.70	46.70	15.00	20	6.35
KF40-3A	MVY-10020	128.30	59.70	46.70	15.00	20	6.35
KF40-1B	MVY-10020	128.30	59.70	46.70	15.00	-	6.35
KF40-2B	MVY-10020	128.30	59.70	46.70	15.00	20	6.35
KF40-3B	MVY-10020	128.30	59.70	46.70	15.00	20	6.35



• For more models, please consult customer service

UHV Vacuum



Cylindrical Chamber Assemblies



Cylindrical vacuum chambers can be fabricated from standard vacuum fittings tube and pipe, or custom diameter vacuum components. Vacuum tube and vacuum fitting pipe wall thickness will be according to the diameter and schedule selected. YM vacuum build custom industrial vacuum chambers employing cylindrical configurations, or combinations thereof. It is widely used in related processes in the semiconductor and vacuum industries.

Box Vacuum Chamber



YM vacuum Box vacuum chambers are currently in use around the world, in many different Industries, government labs, Corporate Research and Development, Colleges and Universities. Box vacuum chambers are used for medium vacuum right up to ultra-high vacuum environment.

Spherical Vacuum Chamber



Spherical vacuum chamber is usually installed in a wide range of surface analysis instrumentation. Techniques available include : X-ray Photoelectron Spectroscopy (XPS) , Auger Electron Spectroscopy (AES), Contact Angle and Atomic Force Microscopy (AFM) etc.

More Vacuum Chamber



- Design, processing and production of non-standard piping and pipeline engineering.
- Design, processing and production of various vacuum chambers.
- Provide customers with a complete set of precision processing technology solutions such as design, manufacturing, and consulting
- Complete customer property rights confidentiality system to ensure that the intellectual property rights of customer products are not leaked.
- Applicable industries: semiconductor, liquid crystal display, photovoltaic, OLED, optical fiber communication, scientific research, biochemical medicine, food, automobile and other industries.
- Adapt to the needs of various processing materials, such as stainless steel, aluminum, copper, etc.

附录：常用压强单位换算表

	帕斯卡 Pa(N/m ²)	千克力每平方 厘米Kgf/cm ²	巴 bar	毫巴 mbar	标准大气压 atm	托 torr	毫米汞柱 mmHg	磅每平方英寸 PSI(lb/in ²)
Pa	1	1.02×10 ⁻⁵	1×10 ⁻⁵	0.01	9.87×10 ⁻⁶	7.5×10 ⁻³	7.5×10 ⁻³	1.45×10 ⁻⁴
Kgf/ cm ²	9.8×10 ⁴	1	0.98	980.67	0.967	735.56	735.56	14.2
bar	1×10 ⁵	1.02	1	1000	0.987	750.06	750.06	14.5
mbar	100	1.02×10 ⁻³	0.001	1	9.87×10 ⁻⁴	0.75	0.75	1.45×10 ⁻²
atm	101325	1.03	1.01	1013.25	1	760	760	14.7
torr	133.32	1.36×10 ⁻³	1.33×10 ⁻³	1.33	1.32×10 ⁻³	1	1	1.93×10 ⁻²
lnH2o	249.09	2.54×10 ⁻³	2.49×10 ⁻³	2.49	2.46×10 ⁻³	1.87	1.87	3.61×10 ⁻²
mmHg	133.32	1.36×10 ⁻³	1.33×10 ⁻³	1.33	1.32×10 ⁻³	1	1	1.93×10 ⁻²
PSI	6895	7.03×10 ⁻²	6.90×10 ⁻²	68.95	6.81×10 ⁻²	51.715	51.715	1

密封圈材质特征

特征 Property	三元乙丙 EPDM	丁晴橡胶 NBR	氟橡胶 Viton	硅橡胶 Silicone
温度范围	-48 - 135°C	-40 - 107°C	-28 - 204°C	-62 - 232°C
耐酸性	好	好	极好	好
耐碱性	好	好	极好	不好
耐汽油度	不好	极好	极好	好
耐柴油度	好	好	极好	好
耐磨力	极好	好	好	极好
承受力	一般	好	极好	极好



HGS



The quality of casting the future

上海鑫熠海科技集团有限公司

电话: 021-54109855 13788953881

传真: 021-59110086

邮箱: info@hgs-group.cn 邮编: 200235

工厂地址: 江西省九江市共青城甘露镇高新三路

办公地址: 上海市徐汇区中山西路2025号永升大厦1501室

Shanghai HGS Technology Group Co.

TEL: [021-54109855](tel:021-54109855) 13788953881

FAX: 021-59110086

E-mail: info@hgs-group.cn ZIP: 200235

Factory Add: Gaoxin 3rd Road, Ganlu Town, Gongqingcheng, Jiujiang City, Jiangxi Province

Office Add: Room 1501, Yongsheng Building, 2025 Zhongshan West Road, Xuhui District, Shanghai